

## HIGHLIGHTS OF PRESCRIBING INFORMATION

These highlights do not include all the information needed to use EMEND FOR INJECTION safely and effectively. See full prescribing information for EMEND FOR INJECTION.

**EMEND (fosaprepitant) for injection, for intravenous use**  
**Initial U.S. Approval: 2008**

### RECENT MAJOR CHANGES

Indications and Usage (1)	04/2018
Dosage and Administration (2.2, 2.3)	04/2018
Warnings and Precautions (5.2)	08/2017
Warnings and Precautions (5.3)	03/2018

### INDICATIONS AND USAGE

EMEND® for injection is a substance P/neurokinin-1 (NK<sub>1</sub>) receptor antagonist, indicated in adults and pediatric patients 6 months of age and older, in combination with other antiemetic agents, for the prevention of (1):

- acute and delayed nausea and vomiting associated with initial and repeat courses of highly emetogenic cancer chemotherapy (HEC) including high-dose cisplatin.
- delayed nausea and vomiting associated with initial and repeat courses of moderately emetogenic cancer chemotherapy (MEC).

#### Limitations of Use (1)

- EMEND has not been studied for treatment of established nausea and vomiting.

### DOSAGE AND ADMINISTRATION

- **Recommended Dosage (2.1, 2.2)**
- Adults: 150 mg on Day 1.
- **Pediatrics (6 months to 17 years):** a single-day of EMEND for injection on Day 1 (for single dose chemotherapy regimens) or a 3-day EMEND regimen of EMEND for injection on Day 1 and EMEND capsules or oral suspension on Days 2 and 3 (for single or multi-day chemotherapy regimens).
- Administer EMEND for injection on Day 1 as an intravenous infusion over 20 to 30 minutes (adults), 30 minutes (12 years to 17 years) or 60 minutes (6 months to less than 12 years) completing the infusion approximately 30 minutes prior to chemotherapy.
- In pediatrics, administer EMEND through a central venous catheter.
- See Full Prescribing Information for dosages of concomitant antiemetic(s) and pediatric dosages of EMEND. (2.1, 2.2)

### DOSAGE FORMS AND STRENGTHS

EMEND for injection: 150 mg fosaprepitant, lyophilized powder in single-dose vial for reconstitution. (3)

### CONTRAINDICATIONS

- Known hypersensitivity to any component of this drug. (4, 5.2)
- Concurrent use with pimozide. (4)

### WARNINGS AND PRECAUTIONS

- **CYP3A4 Interactions:** Fosaprepitant is a weak inhibitor of CYP3A4, and aprepitant, the active moiety, is a substrate, inhibitor, and inducer of CYP3A4; see Full Prescribing Information for recommendations regarding contraindications, risk of adverse reactions, and dosage adjustment of EMEND and concomitant drugs. (4, 5.1, 7.1, 7.2)
- **Hypersensitivity Reactions (including anaphylaxis and anaphylactic shock):** May occur during or soon after infusion. If symptoms occur, discontinue the drug. Do not reinitiate EMEND if symptoms occur with previous use. (4, 5.2)
- **Infusion Site Reactions (including thrombophlebitis, necrosis, and vasculitis):** Majority of reactions reported in patients receiving vesicant chemotherapy. Avoid infusion into small veins. Discontinue infusion and administer treatment if a severe reaction develops. (5.3)
- **Warfarin (a CYP2C9 substrate):** Risk of decreased INR of prothrombin time; monitor INR in 2-week period, particularly at 7 to 10 days, following initiation of EMEND. (5.4, 7.1)
- **Hormonal Contraceptives:** Efficacy of contraceptives may be reduced during and for 28 days following administration of EMEND. Use effective alternative or back-up methods of contraception. (5.5, 7.1, 8.3)

### ADVERSE REACTIONS

- Most common adverse reactions in adults (≥2%) are: fatigue, diarrhea, neutropenia, asthenia, anemia, peripheral neuropathy, leukopenia, dyspepsia, urinary tract infection, pain in extremity. (6.1)
- Adverse reactions in pediatrics are similar to adults.

**To report SUSPECTED ADVERSE REACTIONS, contact Merck Sharp & Dohme Corp., a subsidiary of Merck & Co., Inc., at 1-877-888-4231 or FDA at 1-800-FDA-1088 or [www.fda.gov/medwatch](http://www.fda.gov/medwatch).**

### DRUG INTERACTIONS

See Full Prescribing Information for a list of clinically significant drug interactions. (4, 5.1, 5.4, 5.5, 7.1, 7.2)

**See 17 for PATIENT COUNSELING INFORMATION and FDA-approved patient labeling.**

Revised: 04/2018

## FULL PRESCRIBING INFORMATION: CONTENTS\*

### 1 INDICATIONS AND USAGE

### 2 DOSAGE AND ADMINISTRATION

- 2.1 Prevention of Nausea and Vomiting Associated with HEC and MEC in Adult Patients
- 2.2 Prevention of Nausea and Vomiting Associated with HEC and MEC in Pediatric Patients
- 2.3 Preparation of EMEND for Injection

### 3 DOSAGE FORMS AND STRENGTHS

### 4 CONTRAINDICATIONS

### 5 WARNINGS AND PRECAUTIONS

- 5.1 Clinically Significant CYP3A4 Drug Interactions
- 5.2 Hypersensitivity Reactions
- 5.3 Infusion Site Reactions
- 5.4 Decrease in INR with Concomitant Warfarin
- 5.5 Risk of Reduced Efficacy of Hormonal Contraceptives

### 6 ADVERSE REACTIONS

- 6.1 Clinical Trials Experience
- 6.2 Postmarketing Experience

### 7 DRUG INTERACTIONS

- 7.1 Effect of Fosaprepitant/Aprepitant on the Pharmacokinetics of Other Drugs
- 7.2 Effect of Other Drugs on the Pharmacokinetics of Fosaprepitant/Aprepitant

### 8 USE IN SPECIFIC POPULATIONS

8.1 Pregnancy

8.2 Lactation

8.3 Females and Males of Reproductive Potential

8.4 Pediatric Use

8.5 Geriatric Use

8.6 Patients with Hepatic Impairment

### 10 OVERDOSAGE

### 11 DESCRIPTION

### 12 CLINICAL PHARMACOLOGY

- 12.1 Mechanism of Action
- 12.2 Pharmacodynamics
- 12.3 Pharmacokinetics

### 13 NONCLINICAL TOXICOLOGY

13.1 Carcinogenesis, Mutagenesis, Impairment of Fertility

### 14 CLINICAL STUDIES

- 14.1 Prevention of Nausea and Vomiting Associated with HEC in Adults
- 14.2 Prevention of Nausea and Vomiting Associated with MEC in Adults

### 16 HOW SUPPLIED/STORAGE AND HANDLING

### 17 PATIENT COUNSELING INFORMATION

\*Sections or subsections omitted from the full prescribing information are not listed.

---

## FULL PRESCRIBING INFORMATION

### 1 INDICATIONS AND USAGE

EMEND® for injection, in combination with other antiemetic agents, is indicated in adults and pediatric patients 6 months of age and older for the prevention of:

- acute and delayed nausea and vomiting associated with initial and repeat courses of highly emetogenic cancer chemotherapy (HEC) including high-dose cisplatin.
- delayed nausea and vomiting associated with initial and repeat courses of moderately emetogenic cancer chemotherapy (MEC).

#### Limitations of Use

- EMEND has not been studied for the treatment of established nausea and vomiting.

### 2 DOSAGE AND ADMINISTRATION

#### 2.1 Prevention of Nausea and Vomiting Associated with HEC and MEC in Adult Patients

The recommended dosage of EMEND for injection, dexamethasone, and a 5-HT<sub>3</sub> antagonist for the prevention of nausea and vomiting associated with administration of HEC or MEC in adults is shown in Table 1 or Table 2, respectively. Administer EMEND for injection as an intravenous infusion on Day 1 over 20 to 30 minutes, completing the infusion approximately 30 minutes prior to chemotherapy.

**Table 1**  
**Recommended Adult Dosing for the Prevention of Nausea and Vomiting Associated with HEC**

	Day 1	Day 2	Day 3	Day 4
EMEND for injection	150 mg intravenously over 20 to 30 minutes approximately 30 minutes prior to chemotherapy	none	none	none
Dexamethasone*	12 mg orally	8 mg orally	8 mg orally twice daily	8 mg orally twice daily
5-HT <sub>3</sub> antagonist	See selected 5-HT <sub>3</sub> antagonist prescribing information for the recommended dosage	none	none	none

\*Administer dexamethasone 30 minutes prior to chemotherapy treatment on Day 1 and in the morning on Days 2 through 4. Also administer dexamethasone in the evenings on Days 3 and 4. A 50% dosage reduction of dexamethasone on Days 1 and 2 is recommended to account for a drug interaction with EMEND [see *Clinical Pharmacology* (12.3)].

**Table 2**  
**Recommended Adult Dosing for the Prevention of Nausea and Vomiting Associated with MEC**

	Day 1
EMEND for injection	150 mg intravenously over 20 to 30 minutes approximately 30 minutes prior to chemotherapy
Dexamethasone*	12 mg orally
5-HT <sub>3</sub> antagonist	See selected 5-HT <sub>3</sub> antagonist prescribing information for the recommended dosage

\*Administer dexamethasone 30 minutes prior to chemotherapy treatment on Day 1. A 50% dosage reduction of dexamethasone is recommended to account for a drug interaction with EMEND [see *Clinical Pharmacology* (12.3)].

#### 2.2 Prevention of Nausea and Vomiting Associated with HEC and MEC in Pediatric Patients

The recommended pediatric dose regimens of EMEND, to be administered with a 5-HT<sub>3</sub> antagonist, with or without a corticosteroid, for the prevention of nausea and vomiting associated with administration of single or multi-day chemotherapy regimens of HEC or MEC, are shown in Tables 3 and 4. Single-day chemotherapy regimens include those regimens in which HEC or MEC is administered for a single day

only. Multi-day chemotherapy regimens include chemotherapy regimens in which HEC or MEC is administered for 2 or more days.

**EMEND Dosage Regimens for Use with Single-Day Chemotherapy Regimens**

For pediatric patients weighing at least 6 kg receiving single-day HEC or MEC, EMEND may be administered as:

- a single dose regimen of EMEND for injection infused through a central venous catheter on Day 1, as shown in Table 3; or
- as a 3-day EMEND regimen consisting of EMEND for injection as an intravenous infusion through a central venous catheter on Day 1 and EMEND capsules or EMEND for oral suspension on Days 2 and 3, as shown in Table 4.

Administer EMEND for injection on Day 1 over 30 minutes (12 years to 17 years) or 60 minutes (6 months to less than 12 years), completing the infusion approximately 30 minutes prior to chemotherapy.

**Table 3**  
**Single Dose Regimen of EMEND for injection for Pediatric Patients 6 Months\* to 17 Years for the Prevention of Nausea and Vomiting Associated with Single-Day Regimens of HEC or MEC**

Drug	Age	Regimen
EMEND for injection	12 Years to 17 Years	150 mg intravenously over 30 minutes
	2 Years to less than 12 Years	4 mg/kg (maximum dose 150 mg) intravenously over 60 minutes
	6 Months to less than 2 Years	5 mg/kg (maximum dose 150 mg) intravenously over 60 minutes
Dexamethasone <sup>†</sup>	6 Months to 17 Years	If a corticosteroid, such as dexamethasone, is co-administered, administer 50% of the recommended corticosteroid dose on Days 1 and 2.
5-HT <sub>3</sub> antagonist	6 Months to 17 Years	See selected 5-HT <sub>3</sub> antagonist prescribing information for the recommended dosage

\* Dosing in pediatric patients less than 6 kg is not recommended

<sup>†</sup>Administer dexamethasone 30 minutes prior to chemotherapy treatment on Day 1

**EMEND Dosage Regimen for Use with Multi-Day Chemotherapy Regimens**

For pediatric patients weighing at least 6 kg receiving multi-day regimens of HEC or MEC, administer EMEND on Days 1, 2, and 3. Administer EMEND for injection as an intravenous infusion through a central venous catheter on Day 1 and EMEND capsules or EMEND for oral suspension on Days 2 and 3, as shown in Table 4.

Administer EMEND for injection on Day 1 over 30 minutes (12 years to 17 years) or 60 minutes (6 months to less than 12 years), completing the infusion approximately 30 minutes prior to chemotherapy.

**Table 4**  
**Pediatric Patients 6 Months\* to 17 Years Recommended 3-Day EMEND Dosage Regimen for Prevention of Nausea and Vomiting Associated with Single or Multi-day Regimens of HEC or MEC**

Age Group	Drug	Day 1	Day 2	Day 3
12 Years to 17 Years	EMEND for injection	115 mg intravenously over 30 minutes	--	--
	EMEND capsules <sup>†</sup>	--	80 mg orally	80 mg orally
6 Months to Less than 12 Years	EMEND for injection	3 mg/kg (maximum dose 115 mg) intravenously over 60 minutes	--	--
	EMEND for oral suspension	--	2 mg/kg orally (maximum 80 mg)	2 mg/kg orally (maximum 80 mg)
6 Months to 17 Years	Dexamethasone <sup>‡</sup>	If a corticosteroid, such as dexamethasone, is co-administered, administer 50% of the recommended corticosteroid dose on Days 1 through 4		
6 Months to 17 Years	5-HT <sub>3</sub> antagonist	See selected 5-HT <sub>3</sub> antagonist prescribing information for the recommended dosage		

Dosing in pediatric patients less than 6 kg is not recommended

<sup>†</sup> For patients 12 years to 17 years who cannot swallow oral capsules, EMEND for oral suspension can be used instead.

<sup>‡</sup> Administer dexamethasone 30 minutes prior to chemotherapy treatment on Day 1

## 2.3 Preparation of EMEND for injection

**Table 5**  
**Preparation Instructions for EMEND for injection (150 mg)**

Step 1	Aseptically inject 5 mL 0.9% Sodium Chloride Injection, USP into the vial. Assure that 0.9% Sodium Chloride Injection, USP is added to the vial along the vial wall in order to prevent foaming. Swirl the vial gently. Avoid shaking and jetting 0.9% Sodium Chloride Injection, USP into the vial.
Step 2	Aseptically prepare an infusion bag filled with 145 mL of 0.9% Sodium Chloride Injection, USP.
Step 3	Aseptically withdraw the entire volume from the vial and transfer it into the infusion bag containing 145 mL of 0.9% Sodium Chloride Injection, USP to yield a <b>total</b> volume of 150 mL and a final concentration of 1 mg/mL.
Step 4	Gently invert the bag 2 to 3 times.
Step 5	<p>Determine the volume to be administered from this prepared infusion bag, based on the recommended dose [see <i>Dosage and Administration (2.1, 2.2)</i>].</p> <p><u>Adults</u> The entire volume of the prepared infusion bag (150 mL) should be administered.</p> <p><u>Pediatrics</u> In patients 12 years and older, the volume to be administered is calculated as follows:</p> <ul style="list-style-type: none"> <li>• Volume to administer (mL) equals the recommended dose (mg)</li> </ul> <p>In patients 6 months to less than 12 years, the volume to be administered is calculated as follows:</p> <ul style="list-style-type: none"> <li>• Volume to administer (mL) = recommended dose (mg/kg) x weight (kg) <ul style="list-style-type: none"> <li>○ <i>Note: Do not exceed the maximum dose [see Dosage and Administration (2.2)]</i></li> </ul> </li> </ul> <p>In pediatric patients, the entire volume in the infusion bag may not be required.</p>
Step 6	If necessary, for volumes less than 150 mL, the calculated volume can be transferred to an appropriate size bag or syringe prior to administration by infusion.
Step 7	Before administration, inspect the bag for particulate matter and discoloration. Discard the bag if particulate and/or discoloration are observed.

The recommended dose of EMEND for injection is based on the patient's age and weight.

**Caution:** Do not mix or reconstitute EMEND for injection with solutions for which physical and chemical compatibility have not been established. EMEND for injection is incompatible with any solutions containing divalent cations (e.g., Ca<sup>2+</sup>, Mg<sup>2+</sup>), including Lactated Ringer's Solution and Hartmann's Solution.

### Storage

The reconstituted final drug solution is stable for 24 hours at ambient room temperature [at or below 25°C (77°F)].

## **3 DOSAGE FORMS AND STRENGTHS**

EMEND for injection: 150 mg fosaprepitant, white to off-white lyophilized powder in single-dose glass vial for reconstitution

## **4 CONTRAINDICATIONS**

EMEND is contraindicated in patients:

- who are hypersensitive to any component of the product. Hypersensitivity reactions including anaphylactic reactions, flushing, erythema, and dyspnea have been reported [see *Warnings and Precautions (5.2), Adverse Reactions (6.2)*].
- taking pimoziide. Inhibition of CYP3A4 by aprepitant, the active moiety, could result in elevated plasma concentrations of this drug, which is a CYP3A4 substrate, potentially causing serious or life-threatening reactions, such as QT prolongation, a known adverse reaction of pimoziide [see *Warnings and Precautions (5.1)*].

## **5 WARNINGS AND PRECAUTIONS**

### **5.1 Clinically Significant CYP3A4 Drug Interactions**

Fosaprepitant, a prodrug of aprepitant, is a weak inhibitor of CYP3A4, and aprepitant is a substrate, inhibitor, and inducer of CYP3A4.

- Use of EMEND with other drugs that are CYP3A4 substrates, may result in increased plasma concentration of the concomitant drug.
  - Use of pimoziide with EMEND is contraindicated due to the risk of significantly increased plasma concentrations of pimoziide, potentially resulting in prolongation of the QT interval, a known adverse reaction of pimoziide [see *Contraindications (4)*].
- Use of EMEND with strong or moderate CYP3A4 inhibitors (e.g., ketoconazole, diltiazem) may increase plasma concentrations of aprepitant and result in an increased risk of adverse reactions related to EMEND.
- Use of EMEND with strong CYP3A4 inducers (e.g., rifampin) may result in a reduction in aprepitant plasma concentrations and decreased efficacy of EMEND.

See Table 7 and Table 8 for a listing of potentially significant drug interactions [see *Drug Interactions (7.1, 7.2)*].

### **5.2 Hypersensitivity Reactions**

Serious hypersensitivity reactions, including anaphylaxis and anaphylactic shock, during or soon after infusion of fosaprepitant have occurred. Symptoms including flushing, erythema, dyspnea, hypotension and syncope have been reported [see *Adverse Reactions (6.2)*].

Monitor patients during and after infusion. If hypersensitivity reactions occur, discontinue the infusion and administer appropriate medical therapy. Do not reinstate EMEND in patients who experience these symptoms with previous use [see *Contraindications (4)*].

### **5.3 Infusion Site Reactions**

Infusion site reactions (ISRs) have been reported with the use of EMEND for injection [see *Adverse Reactions (6.1)*]. The majority of severe ISRs, including thrombophlebitis and vasculitis, were reported with concomitant vesicant (anthracycline-based) chemotherapy administration, particularly when associated with extravasation. Necrosis was also reported in some patients with concomitant vesicant chemotherapy. Most ISRs occurred with the first, second or third exposure to single doses of EMEND for injection and in some cases, reactions persisted for two weeks or longer. Treatment of severe ISRs consisted of medical, and in some cases surgical, intervention.

Avoid infusion of EMEND for injection into small veins or through a butterfly catheter. If a severe ISR develops during infusion, discontinue the infusion and administer appropriate medical treatment.

#### 5.4 Decrease in INR with Concomitant Warfarin

Coadministration of EMEND with warfarin, a CYP2C9 substrate, may result in a clinically significant decrease in the International Normalized Ratio (INR) of prothrombin time [see *Clinical Pharmacology* (12.3)]. Monitor the INR in patients on chronic warfarin therapy in the 2-week period, particularly at 7 to 10 days, following initiation of EMEND with each chemotherapy cycle [see *Drug Interactions* (7.1)].

#### 5.5 Risk of Reduced Efficacy of Hormonal Contraceptives

Upon coadministration with EMEND, the efficacy of hormonal contraceptives may be reduced during administration of and for 28 days following the last dose of EMEND [see *Clinical Pharmacology* (12.3)]. Advise patients to use effective alternative or back-up methods of contraception during treatment with EMEND and for 1 month following administration of EMEND [see *Drug Interactions* (7.1), *Use in Specific Populations* (8.3)].

### 6 ADVERSE REACTIONS

The following clinically significant adverse reactions are described elsewhere in the labeling:

- Hypersensitivity Reactions [see *Warnings and Precautions* (5.2)]
- Infusion Site Reactions [see *Warnings and Precautions* (5.3)]

#### 6.1 Clinical Trials Experience

Because clinical trials are conducted under widely varying conditions, adverse reaction rates observed in the clinical trials of a drug cannot be directly compared to rates in the clinical trials of another drug and may not reflect the rates observed in clinical practice.

The overall safety of EMEND for injection was evaluated in approximately 1800 adult and pediatric patients.

#### Adverse Reactions in Adults for the Prevention of Nausea and Vomiting Associated with MEC

In an active-controlled clinical trial in patients receiving MEC, safety was evaluated in 504 patients receiving a single dose of EMEND for injection in combination with ondansetron and dexamethasone (EMEND regimen) compared to 497 patients receiving ondansetron and dexamethasone alone (standard therapy). The most common adverse reactions are listed in Table 6.

**Table 6**  
**Most Common Adverse Reactions in Patients Receiving MEC\***

	EMEND for injection, ondansetron, and dexamethasone <sup>†</sup> (N=504)	Ondansetron and dexamethasone <sup>‡</sup> (N=497)
fatigue	15%	13%
diarrhea	13%	11%
neutropenia	8%	7%
asthenia	4%	3%
anemia	3%	2%
peripheral neuropathy	3%	2%
leukopenia	2%	1%
dyspepsia	2%	1%
urinary tract infection	2%	1%
pain in extremity	2%	1%

\*Reported in ≥2% of patients treated with the EMEND regimen and at a greater incidence than standard therapy.

<sup>†</sup>EMEND regimen

<sup>‡</sup>Standard therapy

Infusion-site reactions were reported in 2.2% of patients treated with the EMEND regimen compared to 0.6% of patients treated with standard therapy. The infusion-site reactions included: infusion-site pain (1.2%, 0.4%), injection-site irritation (0.2%, 0.0%), vessel puncture-site pain (0.2%, 0.0%), and

infusion-site thrombophlebitis (0.6%, 0.0%), reported in the EMEND regimen compared to standard therapy, respectively.

#### Adverse Reactions in Adults for the Prevention of Nausea and Vomiting Associated with HEC

In an active-controlled clinical study in patients receiving HEC, safety was evaluated for 1143 patients receiving a single dose of EMEND for injection compared to 1169 patients receiving the 3-day regimen of oral EMEND (aprepitant) [see *Clinical Studies (14.1)*]. The safety profile was generally similar to that seen in the MEC study with fosaprepitant and prior HEC studies with aprepitant. However, infusion-site reactions occurred at a higher incidence in patients in the fosaprepitant group (3.0%) compared to those in the aprepitant group (0.5%). The following additional infusion-site reactions occurred in the HEC study and were not reported in the MEC study described above: infusion-site erythema (0.5%, 0.1%), infusion-site pruritus (0.3%, 0.0%), and infusion-site induration (0.2%, 0.1%), reported in the fosaprepitant group compared to the aprepitant group, respectively.

#### Adverse Reactions in Pediatric Patients 6 Months to 17 Years of Age for the Prevention of Nausea and Vomiting Associated with HEC or MEC

##### *Single-Dose EMEND for Injection Regimen*

The safety of a single dose of EMEND for injection in pediatric patients (6 months to 17 years) was evaluated in two active-controlled and a single-arm clinical study in patients who received either HEC or MEC. Patients also received ondansetron with or without dexamethasone. The adverse reaction profile was similar to adults. The safety analysis included 69 pediatric patients who received the recommended dose. An additional 70 patients received a single, higher-than-recommended dose. The most common adverse reactions that occurred in >15% of patients who received the recommended dose were anemia, neutropenia, thrombocytopenia, and febrile neutropenia.

##### *3-Day IV/Oral/Oral EMEND Regimen*

In pediatric patients (12 to 17 years), the safety of the 3-day IV/oral/oral EMEND regimen was evaluated in a single-arm clinical study including 12 patients who received a regimen of either HEC or MEC. In pediatric patients 6 months to 12 years of age, the safety of the 3-day IV/oral/oral EMEND regimen was not directly evaluated. The safety of a single-dose of EMEND for injection (3 mg/kg) administered on day 1 of the 3-day IV/oral/oral regimen was evaluated in one active-controlled and one single-arm study including 48 patients who received a regimen of either HEC or MEC. Patients also received ondansetron with or without dexamethasone. The adverse reaction profile was similar to adults and pediatric patients receiving a single dose of EMEND for injection.

Because fosaprepitant is converted to aprepitant, those adverse reactions associated with aprepitant might also be expected to occur with EMEND for injection. See the full prescribing information for EMEND capsules for complete safety information regarding studies performed with oral aprepitant.

## **6.2 Postmarketing Experience**

The following adverse reactions have been identified during post-approval use of EMEND. Because these reactions are reported voluntarily from a population of uncertain size, it is not always possible to reliably estimate their frequency or establish a causal relationship to drug exposure.

*Skin and subcutaneous tissue disorders:* pruritus, rash, urticaria, Stevens-Johnson syndrome/toxic epidermal necrolysis [see *Warnings and Precautions (5.2)*].

*Immune system disorders:* hypersensitivity reactions including anaphylaxis and anaphylactic shock [see *Contraindications (4), Warnings and Precautions (5.2)*].

*Nervous system disorders:* ifosfamide-induced neurotoxicity reported after EMEND and ifosfamide coadministration.

## **7 DRUG INTERACTIONS**

### **7.1 Effect of Fosaprepitant/Aprepitant on the Pharmacokinetics of Other Drugs**

When administered intravenously, fosaprepitant, a prodrug of aprepitant, is converted to aprepitant within 30 minutes. Therefore, drug interactions following administration of EMEND for injection are likely to occur with drugs that interact with oral aprepitant.

Fosaprepitant, given as a single 150-mg dose, is a weak inhibitor of CYP3A4, and the weak inhibition of CYP3A4 continues for 2 days after single dose administration. Single dose fosaprepitant does



not induce CYP3A4. Aprepitant is a substrate, an inhibitor, and an inducer of CYP3A4. Aprepitant is also an inducer of CYP2C9 [see *Clinical Pharmacology (12.3)*].

Some substrates of CYP3A4 are contraindicated with EMEND [see *Contraindications (4)*]. Dosage adjustment of some CYP3A4 and CYP2C9 substrates may be warranted, as shown in Table 7.

**Table 7**  
**Effects of Fosaprepitant/Aprepitant on the Pharmacokinetics of Other Drugs**

<b>CYP3A4 Substrates</b>	
<b>Pimozide</b>	
<i>Clinical Impact</i>	Increased pimozide exposure
<i>Intervention</i>	EMEND is contraindicated [see <i>Contraindications (4)</i> ].
<b>Benzodiazepines</b>	
<i>Clinical Impact</i>	Increased exposure to midazolam or other benzodiazepines metabolized via CYP3A4 (alprazolam, triazolam) may increase the risk of adverse reactions [see <i>Clinical Pharmacology (12.3)</i> ].
<i>Intervention</i>	Monitor for benzodiazepine-related adverse reactions.
<b>Dexamethasone</b>	
<i>Clinical Impact</i>	Increased dexamethasone exposure [see <i>Clinical Pharmacology (12.3)</i> ].
<i>Intervention</i>	Reduce the dose of oral dexamethasone by approximately 50% [see <i>Dosage and Administration (2.1)</i> ].
<b>Methylprednisolone</b>	
<i>Clinical Impact</i>	Increased methylprednisolone exposure [see <i>Clinical Pharmacology (12.3)</i> ].
<i>Intervention</i>	Reduce the dose of oral methylprednisolone by approximately 50% on Days 1 and 2 for patients receiving HEC and on Day 1 for patients receiving MEC. Reduce the dose of intravenous methylprednisolone by 25% on Days 1 and 2 for patients receiving HEC and on Day 1 for patients receiving MEC.
<b>Chemotherapeutic agents that are metabolized by CYP3A4</b>	
<i>Clinical Impact</i>	Increased exposure of the chemotherapeutic agent may increase the risk of adverse reactions [see <i>Clinical Pharmacology (12.3)</i> ].
<i>Intervention</i>	<u>Vinblastine, vincristine, or ifosfamide or other chemotherapeutic agents</u> <ul style="list-style-type: none"> <li>• Monitor for chemotherapeutic-related adverse reactions.</li> </ul> <u>Etoposide, vinorelbine, paclitaxel, and docetaxel</u> <ul style="list-style-type: none"> <li>• No dosage adjustment needed.</li> </ul>
<b>Hormonal Contraceptives</b>	
<i>Clinical Impact</i>	Decreased hormonal exposure during administration of and for 28 days after administration of the last dose of EMEND [see <i>Warnings and Precautions (5.5)</i> , <i>Use in Specific Populations (8.3)</i> , and <i>Clinical Pharmacology (12.3)</i> ].
<i>Intervention</i>	Effective alternative or back-up methods of contraception (such as condoms and spermicides) should be used during treatment with EMEND and for 1 month following administration of EMEND.
<i>Examples</i>	birth control pills, skin patches, implants, and certain IUDs
<b>CYP2C9 Substrates</b>	
<b>Warfarin</b>	
<i>Clinical Impact</i>	Decreased warfarin exposure and prolongation of prothrombin time (INR) [see <i>Warnings and Precautions (5.4)</i> , <i>Clinical Pharmacology (12.3)</i> ].
<i>Intervention</i>	In patients on chronic warfarin therapy, monitor the prothrombin time (INR) in the 2-week period, particularly at 7 to 10 days, following administration of EMEND with each chemotherapy cycle.
<b>Other</b>	
<b>5-HT<sub>3</sub> Antagonists</b>	
<i>Clinical Impact</i>	No change in the exposure of the 5-HT <sub>3</sub> antagonist [see <i>Clinical Pharmacology (12.3)</i> ].
<i>Intervention</i>	No dosage adjustment needed
<i>Examples</i>	ondansetron, granisetron, dolasetron

## 7.2 Effect of Other Drugs on the Pharmacokinetics of Fosaprepitant/Aprepitant

Aprepitant is a CYP3A4 substrate [see *Clinical Pharmacology (12.3)*]. Co-administration of EMEND with drugs that are inhibitors or inducers of CYP3A4 may result in increased or decreased plasma concentrations of aprepitant, respectively, as shown in Table 8.

**Table 8**  
**Effects of Other Drugs on Pharmacokinetics of Fosaprepitant/Aprepitant**

<b>Moderate to Strong CYP3A4 Inhibitors</b>	
<i>Clinical Impact</i>	Significantly increased exposure of aprepitant may increase the risk of adverse reactions associated with EMEND [see <i>Adverse Reactions (6.1)</i> , <i>Clinical Pharmacology (12.3)</i> ].
<i>Intervention</i>	Avoid concomitant use of EMEND
<i>Examples</i>	<u>Moderate inhibitor:</u> diltiazem  <u>Strong inhibitors:</u> ketoconazole, itraconazole, nefazodone, troleandomycin, clarithromycin, ritonavir, nelfinavir
<b>Strong CYP3A4 Inducers</b>	
<i>Clinical Impact</i>	Substantially decreased exposure of aprepitant in patients chronically taking a strong CYP3A4 inducer may decrease the efficacy of EMEND [see <i>Clinical Pharmacology (12.3)</i> ].
<i>Intervention</i>	Avoid concomitant use of EMEND
<i>Examples</i>	rifampin, carbamazepine, phenytoin

## **8 USE IN SPECIFIC POPULATIONS**

### **8.1 Pregnancy**

#### Risk Summary

There are insufficient data on use of EMEND in pregnant women to inform a drug associated risk. In animal reproduction studies, no adverse developmental effects were observed in rats or rabbits exposed during the period of organogenesis to systemic drug levels (AUC) approximately equivalent to the exposure at the recommended human dose (RHD) of 150 mg [see *Data*].

The estimated background risk of major birth defects and miscarriage for the indicated populations is unknown. In the U.S. general population, the estimated background risk of major birth defects and miscarriage in clinically recognized pregnancies is 2 to 4% and 15 to 20%, respectively.

#### Data

##### *Animal Data*

In embryofetal development studies in rats and rabbits, aprepitant was administered during the period of organogenesis at oral doses up to 1000 mg/kg twice daily (rats) and up to the maximum tolerated dose of 25 mg/kg/day (rabbits). No embryofetal lethality or malformations were observed at any dose level in either species. The exposures (AUC) in pregnant rats at 1000 mg/kg twice daily and in pregnant rabbits at 25 mg/kg/day were approximately equivalent to the exposure at the RHD of 150 mg. Aprepitant crosses the placenta in rats and rabbits.

### **8.2 Lactation**

#### Risk Summary

Lactation studies have not been conducted to assess the presence of aprepitant in human milk, the effects on the breastfed infant, or the effects on milk production. Aprepitant is present in rat milk. The developmental and health benefits of breastfeeding should be considered along with the mother's clinical need for EMEND and any potential adverse effects on the breastfed infant from EMEND or from the underlying maternal condition.

### **8.3 Females and Males of Reproductive Potential**

#### Contraception

Upon administration of EMEND, the efficacy of hormonal contraceptives may be reduced. Advise females of reproductive potential using hormonal contraceptives to use an effective alternative or back-up non-hormonal contraceptive (such as condoms and spermicides) during treatment with EMEND and for 1 month following the last dose [see *Drug Interactions (7.1)*, *Clinical Pharmacology (12.3)*].

### **8.4 Pediatric Use**

The safety and effectiveness of a single dose regimen of EMEND for injection and a 3-day IV/oral/oral EMEND regimen have been established in pediatric patients 6 months to 17 years for the prevention of acute and delayed nausea and vomiting associated with initial and repeat courses of HEC and MEC.

Use of EMEND in this age group is supported by evidence from adequate and well-controlled studies of EMEND for injection in adults, with additional safety, efficacy and pharmacokinetic data in pediatric patients 6 months to 17 years. Efficacy was also supported by data from an adequate and well-controlled study of a 3-day oral aprepitant regimen in pediatric patients 6 months to 17 years. See the full prescribing information for EMEND capsules for complete clinical information regarding studies performed with oral aprepitant. Adverse reactions were similar to those reported in adult patients. [See *Dosage and Administration (2.2)*, *Adverse Reactions (6.1)*, *Clinical Pharmacology (12.3)*].

The safety of EMEND for injection administered on consecutive days has not been established in pediatric patients 6 months to 17 years for the prevention of acute and delayed nausea and vomiting associated with initial and repeat courses of HEC and MEC.

The safety and effectiveness of EMEND for the prevention of nausea and vomiting associated with HEC or MEC have not been established in patients less than 6 months of age.

#### Juvenile Animal Toxicity Data

In juvenile dogs treated with fosaprepitant, changes in reproductive organs were observed. In juvenile rats treated with aprepitant, slight changes in sexual maturation were observed without an effect on reproduction. No effects on neurobehavior, sensory and motor function, or learning and memory were observed in rats.

In a toxicity study in juvenile dogs treated with fosaprepitant from postnatal day 14 (equivalent to a newborn human) to day 42 (approximately equivalent to a 2 year old human), decreased testicular weight and Leydig cell size were seen in the males at 6 mg/kg/day and increased uterine weight, hypertrophy of the uterus and cervix, and edema of vaginal tissues were seen in females from 4 mg/kg/day. A study was also conducted in young rats to evaluate the effects of aprepitant on growth and on neurobehavioral and sexual development. Rats were treated at oral doses up to the maximum feasible dose of 1000 mg/kg twice daily (providing exposure in male and female rats lower than the exposure at the recommended pediatric human dose) from the early postnatal period (Postnatal Day 10 (equivalent to a newborn human) through Postnatal Day 58 (approximately equivalent to a 15 year old human)). Slight changes in the onset of sexual maturation were observed in female and male rats; however, there were no effects on mating, fertility, embryonic-fetal survival, or histomorphology of the reproductive organs. There were no effects in neurobehavioral tests of sensory function, motor function, and learning and memory.

### **8.5 Geriatric Use**

Of the 1649 adult cancer patients treated with intravenous EMEND in HEC and MEC clinical studies, 27% were aged 65 and over, while 5% were aged 75 and over. Other reported clinical experience with EMEND has not identified differences in responses between elderly and younger patients. In general, use caution when dosing elderly patients as they have a greater frequency of decreased hepatic, renal or cardiac function and concomitant disease or other drug therapy [see *Clinical Pharmacology (12.3)*].

### **8.6 Patients with Hepatic Impairment**

The pharmacokinetics of aprepitant in patients with mild and moderate hepatic impairment were similar to those of healthy subjects with normal hepatic function. No dosage adjustment is necessary for patients with mild to moderate hepatic impairment (Child-Pugh score 5 to 9). There are no clinical or pharmacokinetic data in patients with severe hepatic impairment (Child-Pugh score greater than 9). Therefore, additional monitoring for adverse reactions in these patients may be warranted when EMEND is administered [see *Clinical Pharmacology (12.3)*].

## **10 OVERDOSAGE**

There is no specific information on the treatment of overdose with fosaprepitant or aprepitant.

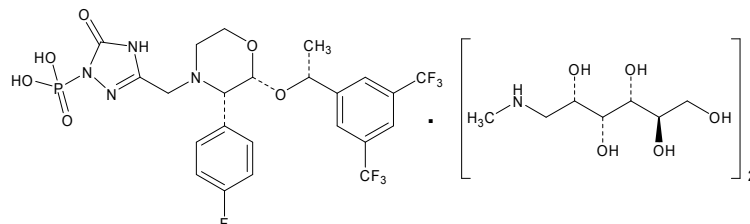
In the event of overdose, EMEND should be discontinued and general supportive treatment and monitoring should be provided. Because of the antiemetic activity of EMEND, drug-induced emesis may not be effective in cases of EMEND overdose.

Aprepitant is not removed by hemodialysis.

## 11 DESCRIPTION

EMEND (fosaprepitant) for injection is a sterile, lyophilized formulation containing fosaprepitant dimeglumine, a prodrug of aprepitant, a substance P/neurokinin-1 (NK<sub>1</sub>) receptor antagonist, an antiemetic agent, chemically described as 1-Deoxy-1-(methylamino)-D-glucitol[3-[[[(2R,3S)-2-[(1R)-1-[3,5-bis(trifluoromethyl)phenyl]ethoxy]-3-(4-fluorophenyl)-4-morpholinyl]methyl]-2,5-dihydro-5-oxo-1H-1,2,4-triazol-1-yl]phosphonate (2:1) (salt).

Its empirical formula is C<sub>23</sub>H<sub>22</sub>F<sub>7</sub>N<sub>4</sub>O<sub>6</sub>P · 2(C<sub>7</sub>H<sub>17</sub>NO<sub>5</sub>) and its structural formula is:



Fosaprepitant dimeglumine is a white to off-white amorphous powder with a molecular weight of 1004.83. It is freely soluble in water.

Each vial of EMEND for injection for administration as an intravenous infusion contains 150 mg of fosaprepitant (equivalent to 245.3 mg of fosaprepitant dimeglumine) and the following inactive ingredients: edetate disodium (5.4 mg), polysorbate 80 (75 mg), lactose anhydrous (375 mg), sodium hydroxide and/or hydrochloric acid (for pH adjustment).

## 12 CLINICAL PHARMACOLOGY

### 12.1 Mechanism of Action

Fosaprepitant is a prodrug of aprepitant and accordingly, its antiemetic effects are attributable to aprepitant.

Aprepitant is a selective high-affinity antagonist of human substance P/neurokinin 1 (NK<sub>1</sub>) receptors. Aprepitant has little or no affinity for serotonin (5-HT<sub>3</sub>), dopamine, and corticosteroid receptors, the targets of existing therapies for chemotherapy-induced nausea and vomiting (CINV). Aprepitant has been shown in animal models to inhibit emesis induced by cytotoxic chemotherapeutic agents, such as cisplatin, via central actions. Animal and human Positron Emission Tomography (PET) studies with aprepitant have shown that it crosses the blood brain barrier and occupies brain NK<sub>1</sub> receptors. Animal and human studies have shown that aprepitant augments the antiemetic activity of the 5-HT<sub>3</sub>-receptor antagonist ondansetron and the corticosteroid dexamethasone and inhibits both the acute and delayed phases of cisplatin-induced emesis.

### 12.2 Pharmacodynamics

#### Cardiac Electrophysiology

In a randomized, double-blind, positive-controlled, thorough QTc study, a single 200-mg dose of fosaprepitant (approximately 1.3 times the recommended dose) had no effect on the QTc interval.

### 12.3 Pharmacokinetics

#### Aprepitant after Fosaprepitant Administration

Following administration of a single intravenous 150-mg dose of fosaprepitant, a prodrug of aprepitant administered as a 20-minute infusion to healthy subjects, the mean AUC<sub>0-∞</sub> of aprepitant was 37.4 (± 14.8) mcg•hr/mL and the mean maximal aprepitant concentration (C<sub>max</sub>) was 4.2 (± 1.2) mcg/mL. Plasma concentrations of fosaprepitant are below the limits of quantification (10 ng/mL) within 30 minutes of the completion of infusion.

#### Distribution

Aprepitant is greater than 95% bound to plasma proteins. The mean apparent volume of distribution at steady state (Vd<sub>ss</sub>) was approximately 70 L in humans.

Aprepitant crosses the blood brain barrier in humans [see *Clinical Pharmacology* (12.1)].

## Elimination

### Metabolism

Fosaprepitant is converted to aprepitant in *in vitro* incubations with human liver preparations and in S9 preparations from multiple other human tissues including kidney, lung and ileum. Thus, it appears that the conversion of fosaprepitant to aprepitant can occur in multiple extrahepatic tissues in addition to the liver.

Aprepitant undergoes extensive metabolism. *In vitro* studies using human liver microsomes indicate that aprepitant is metabolized primarily by CYP3A4 with minor metabolism by CYP1A2 and CYP2C19. Metabolism is largely via oxidation at the morpholine ring and its side chains. No metabolism by CYP2D6, CYP2C9, or CYP2E1 was detected.

In healthy young adults, aprepitant accounts for approximately 24% of the radioactivity in plasma over 72 hours following a single oral 300-mg dose of [<sup>14</sup>C]-aprepitant, indicating a substantial presence of metabolites in the plasma. Seven metabolites of aprepitant, which are only weakly active, have been identified in human plasma.

### Excretion

Following administration of a single intravenous 100-mg dose of [<sup>14</sup>C]-fosaprepitant to healthy subjects, 57% of the radioactivity was recovered in urine and 45% in feces.

Aprepitant is eliminated primarily by metabolism; aprepitant is not renally excreted. The apparent terminal half-life ranged from approximately 9 to 13 hours.

## Specific Populations

### Age: Geriatric Population

Following oral administration of a single 125-mg dose of aprepitant on Day 1 and 80 mg once daily on Days 2 through 5, the AUC<sub>0-24hr</sub> of aprepitant was 21% higher on Day 1 and 36% higher on Day 5 in elderly (65 years and older) relative to younger adults. The C<sub>max</sub> was 10% higher on Day 1 and 24% higher on Day 5 in elderly relative to younger adults. These differences are not considered clinically meaningful [see *Use in Specific Populations (8.5)*].

### Age: Pediatric Population

*Single-Dose EMEND for Injection Regimen:* Simulated systemic exposures of aprepitant in patients 2 years to less than 12 years and observed systemic exposures in patients 6 months to less than 2 years and 12 to 17 years are shown in Table 9, including AUC<sub>0-24hr</sub>, peak plasma concentration (C<sub>max</sub>) on Day 1 and concentrations at the end of Day 1 (C<sub>24</sub>), Day 2 (C<sub>48</sub>) and Day 3 (C<sub>72</sub>).

**Table 9**  
**Systemic Exposures of Aprepitant for Single-Dose EMEND for Injection Regimen in Pediatric Patients**

Population	Single-Dose of EMEND for Injection Regimen	Geometric Mean				
		AUC <sub>0-24hr</sub> (mcg*hr/mL)	C <sub>max</sub> (mcg/mL)	C <sub>24</sub> (mcg/mL)	C <sub>48</sub> (mcg/mL)	C <sub>72</sub> (mcg/mL)
12 Years to 17 Years	150 mg	29.4	3.4	0.7	ND*	ND*
6 Years to less than 12 Years	4 mg/kg	35.2	3.6	0.7	0.2	0.05
2 Years to less than 6 Years		28.2	3.1	0.4	0.1	0.02
6 Months to less than 2 Years	5 mg/kg	32.7	3.3	0.4	NE <sup>†</sup>	ND*

\*ND = Not Determined. Pharmacokinetic samples were not collected to support the parameter value of interest.

<sup>†</sup>NE = Not Estimated. The geometric mean could not be estimated due to values being below the limitation of quantification.

*3-Day IV/Oral/Oral EMEND Regimen:* Simulated aprepitant systemic exposures in patients 6 months to less than 12 years and observed systemic exposures in patients 12 to 17 years are shown in Table 10, including AUC<sub>0-24hr</sub>, peak plasma concentration (C<sub>max</sub>) on Day 1 and concentrations at the end of Day 1 (C<sub>24</sub>), Day 2 (C<sub>48</sub>) and Day 3 (C<sub>72</sub>).

**Table 10**  
**Systemic Exposures of Aprepitant for 3-Day IV/Oral/Oral Regimen in Pediatric Patients**

Population	3-Day Dose of EMEND (IV/Oral/Oral*)	Geometric Mean				
		AUC <sub>0-24hr</sub> (mcg*hr/mL)	C <sub>max</sub> (mcg/mL)	C <sub>24</sub> (mcg/mL)	C <sub>48</sub> (mcg/mL)	C <sub>72</sub> (mcg/mL)
12 Years to 17 Years	115/80/80 mg	18.0	3.0	0.4	0.2	NE <sup>†</sup>
6 Years to less than 12 Years	3/2/2 mg/kg	25.7	2.7	0.5	0.3	0.3
2 Years to less than 6 Years		20.2	2.3	0.3	0.2	0.2
6 Months to less than 2 Years		16.6	1.9	0.2	0.1	0.1

\*IV on Day 1, Oral on Day 2, and Oral on Day 3

<sup>†</sup>NE = Not Estimated. The geometric mean could not be estimated due to values being below the limitation of quantification.

Plasma concentrations of fosaprepitant are negligible within 15 – 30 minutes after the completion of the infusion in pediatric patients.

### Sex

Following oral administration of a single dose of aprepitant, ranging from 40 mg to 375 mg, the AUC<sub>0-24hr</sub> and C<sub>max</sub> are 9% and 17% higher in females as compared with males. The half-life of aprepitant is approximately 25% lower in females as compared with males and T<sub>max</sub> occurs at approximately the same time. These differences are not considered clinically meaningful. A population pharmacokinetic analysis of aprepitant in pediatric patients (6 months to 17 years) suggests that sex has no clinically meaningful effect on the pharmacokinetics of aprepitant.

### Race/Ethnicity

Following oral administration of a single dose of aprepitant, ranging from 40 mg to 375 mg, the AUC<sub>0-24hr</sub> and C<sub>max</sub> are approximately 27% and 19% higher in Hispanics as compared with Caucasians. The AUC<sub>0-24hr</sub> and C<sub>max</sub> were 74% and 47% higher in Asians as compared to Caucasians. There was no difference in AUC<sub>0-24hr</sub> or C<sub>max</sub> between Caucasians and Blacks. These differences are not considered clinically meaningful. A population pharmacokinetic analysis of aprepitant in pediatric patients (6 months to 17 years) suggests that race has no clinically meaningful effect on the pharmacokinetics of aprepitant.

### Renal Impairment

A single 240-mg oral dose of aprepitant was administered to patients with severe renal impairment (creatinine clearance less than 30 mL/min/1.73 m<sup>2</sup> as measured by 24-hour urinary creatinine clearance) and to patients with end stage renal disease (ESRD) requiring hemodialysis.

In patients with severe renal impairment, the AUC<sub>0-∞</sub> of total aprepitant (unbound and protein bound) decreased by 21% and C<sub>max</sub> decreased by 32%, relative to healthy subjects (creatinine clearance greater than 80 mL/min estimated by Cockcroft-Gault method). In patients with ESRD undergoing hemodialysis, the AUC<sub>0-∞</sub> of total aprepitant decreased by 42% and C<sub>max</sub> decreased by 32%. Due to modest decreases in protein binding of aprepitant in patients with renal disease, the AUC of pharmacologically active unbound drug was not significantly affected in patients with renal impairment compared with healthy subjects. Hemodialysis conducted 4 or 48 hours after dosing had no significant effect on the pharmacokinetics of aprepitant; less than 0.2% of the dose was recovered in the dialysate.

### Hepatic Impairment

Fosaprepitant is metabolized in various extrahepatic tissues; therefore hepatic impairment is not expected to alter the conversion of fosaprepitant to aprepitant.

Following administration of a single 125-mg oral dose of aprepitant on Day 1 and 80 mg once daily on Days 2 and 3 to patients with mild hepatic impairment (Child-Pugh score 5 to 6), the AUC<sub>0-24hr</sub> of aprepitant was 11% lower on Day 1 and 36% lower on Day 3, as compared with healthy subjects given the same regimen. In patients with moderate hepatic impairment (Child-Pugh score 7 to 9), the AUC<sub>0-24hr</sub> of aprepitant was 10% higher on Day 1 and 18% higher on Day 3, as compared with healthy subjects given the same regimen. These differences in AUC<sub>0-24hr</sub> are not considered clinically meaningful. There are no

clinical or pharmacokinetic data in patients with severe hepatic impairment (Child-Pugh score greater than 9) [see *Use in Specific Populations (8.6)*].

#### **Body Mass Index (BMI)**

For every 5 kg/m<sup>2</sup> increase in BMI, AUC<sub>0-24hr</sub> and C<sub>max</sub> of aprepitant decrease by 9% and 10%. BMI of subjects in the analysis ranged from 18 kg/m<sup>2</sup> to 36 kg/m<sup>2</sup>. This change is not considered clinically meaningful.

#### **Drug Interactions Studies**

Fosaprepitant, given as a single 150-mg dose, is a weak inhibitor of CYP3A4, with no evidence of inhibition or induction of CYP3A4 observed on Day 4. The weak inhibition of CYP3A4 continues for 2 days after single dose administration of fosaprepitant. Aprepitant is a substrate, an inhibitor, and an inducer of CYP3A4. Aprepitant is also an inducer of CYP2C9.

Fosaprepitant or aprepitant is unlikely to interact with drugs that are substrates for the P-glycoprotein transporter.

#### **Effects of Fosaprepitant/Aprepitant on the Pharmacokinetics of Other Drugs**

##### **CYP3A4 Substrates**

**Midazolam:** Fosaprepitant 150 mg administered as a single intravenous dose on Day 1 increased the AUC<sub>0-∞</sub> of midazolam by approximately 1.8-fold on Day 1 and had no effect on Day 4 when midazolam was coadministered as a single oral dose of 2 mg on Days 1 and 4 [see *Drug Interactions (7.1)*].

##### **Corticosteroids:**

**Dexamethasone:** Fosaprepitant administered as a single 150 mg intravenous dose on Day 1 increased the AUC<sub>0-24hr</sub> of dexamethasone, administered as a single 8-mg oral dose on Days 1, 2, and 3, by approximately 2-fold on Days 1 and 2 [see *Dosage and Administration (2.1)*, *Drug Interactions (7.1)*].

**Methylprednisolone:** When oral aprepitant as a 3-day regimen (125-mg/80-mg/80-mg) was administered with intravenous methylprednisolone 125 mg on Day 1 and oral methylprednisolone 40 mg on Days 2 and 3, the AUC of methylprednisolone was increased by 1.34-fold on Day 1 and by 2.5-fold on Day 3 [see *Drug Interactions (7.1)*].

##### **Chemotherapeutic agents:**

**Docetaxel:** In a pharmacokinetic study, oral aprepitant administered as a 3-day regimen (125-mg/80-mg/80-mg) did not influence the pharmacokinetics of docetaxel.

**Vinorelbine:** In a pharmacokinetic study, oral aprepitant administered as a 3-day regimen (125-mg/80-mg/80-mg) did not influence the pharmacokinetics of vinorelbine to a clinically significant degree.

**Oral contraceptives:** When oral aprepitant was administered as a 3-day regimen (125-mg/80-mg/80-mg) with ondansetron and dexamethasone, and coadministered with an oral contraceptive containing ethinyl estradiol and norethindrone, the trough concentrations of both ethinyl estradiol and norethindrone were reduced by as much as 64% for 3 weeks post-treatment [see *Drug Interactions (7.1)*].

##### **CYP2C9 substrates (Warfarin, Tolbutamide):**

**Warfarin:** A single 125-mg dose of oral aprepitant was administered on Day 1 and 80 mg/day on Days 2 and 3 to subjects who were stabilized on chronic warfarin therapy. Although there was no effect of oral aprepitant on the plasma AUC of R(+) or S(-) warfarin determined on Day 3, there was a 34% decrease in S(-) warfarin trough concentration accompanied by a 14% decrease in the prothrombin time (reported as International Normalized Ratio or INR) 5 days after completion of dosing with oral aprepitant [see *Drug Interactions (7.1)*].

**Tolbutamide:** Oral aprepitant, when given as 125 mg on Day 1 and 80 mg/day on Days 2 and 3, decreased the AUC of tolbutamide by 23% on Day 4, 28% on Day 8, and 15% on Day 15, when a single dose of tolbutamide 500 mg was administered prior to the administration of the 3-day regimen of oral aprepitant and on Days 4, 8, and 15. This effect was not considered clinically important.

### Other Drugs

*P-glycoprotein substrates:* Aprepitant is unlikely to interact with drugs that are substrates for the P-glycoprotein transporter, as demonstrated by the lack of interaction of oral aprepitant with digoxin in a clinical drug interaction study.

*5-HT<sub>3</sub> antagonists:* In clinical drug interaction studies, aprepitant did not have clinically important effects on the pharmacokinetics of ondansetron, granisetron, or hydrodolasetron (the active metabolite of dolasetron).

### Effect of Other Drugs on the Pharmacokinetics of Fosaprepitant/Aprepitant

*Rifampin:* When a single 375-mg dose of oral aprepitant was administered on Day 9 of a 14-day regimen of 600 mg/day of rifampin, a strong CYP3A4 inducer, the AUC of aprepitant decreased approximately 11-fold and the mean terminal half-life decreased approximately 3-fold [see *Drug Interactions (7.2)*].

*Ketoconazole:* When a single 125-mg dose of oral aprepitant was administered on Day 5 of a 10-day regimen of 400 mg/day of ketoconazole, a strong CYP3A4 inhibitor, the AUC of aprepitant increased approximately 5-fold and the mean terminal half-life of aprepitant increased approximately 3-fold [see *Drug Interactions (7.2)*].

*Diltiazem:* In a study in 10 patients with mild to moderate hypertension, administration of 100 mg of fosaprepitant as an intravenous infusion with 120 mg of diltiazem, a moderate CYP3A4 inhibitor administered three times daily, resulted in a 1.5-fold increase in the aprepitant AUC and a 1.4-fold increase in the diltiazem AUC.

When fosaprepitant was administered with diltiazem, the mean maximum decrease in diastolic blood pressure was significantly greater than that observed with diltiazem alone [24.3 ± 10.2 mm Hg with fosaprepitant versus 15.6 ± 4.1 mm Hg without fosaprepitant]. The mean maximum decrease in systolic blood pressure was also greater after co-administration of diltiazem with fosaprepitant than administration of diltiazem alone [29.5 ± 7.9 mm Hg with fosaprepitant versus 23.8 ± 4.8 mm Hg without fosaprepitant]. Co-administration of fosaprepitant and diltiazem; however, did not result in any additional clinically significant changes in heart rate or PR interval, beyond those changes observed with diltiazem alone [see *Drug Interactions (7.2)*].

*Paroxetine:* Coadministration of once daily doses of oral aprepitant 170 mg, with paroxetine 20 mg once daily, resulted in a decrease in AUC by approximately 25% and C<sub>max</sub> by approximately 20% of both aprepitant and paroxetine. This effect was not considered clinically important.

## **13 NONCLINICAL TOXICOLOGY**

### **13.1 Carcinogenesis, Mutagenesis, Impairment of Fertility**

#### Carcinogenesis

Carcinogenicity studies were conducted in Sprague-Dawley rats and in CD-1 mice for 2 years. In the rat carcinogenicity studies, animals were treated with oral doses ranging from 0.05 to 1000 mg/kg twice daily. The highest dose produced systemic exposures to aprepitant approximately equivalent to (female rats) or less than (male rats) the adult human exposure at the RHD of 150 mg. Treatment with aprepitant at doses of 5 to 1000 mg/kg twice daily caused an increase in the incidences of thyroid follicular cell adenomas and carcinomas in male rats. In female rats, it produced hepatocellular adenomas at 5 to 1000 mg/kg twice daily and hepatocellular carcinomas and thyroid follicular cell adenomas at 125 to 1000 mg/kg twice daily. In the mouse carcinogenicity studies, the animals were treated with oral doses ranging from 2.5 to 2000 mg/kg/day. The highest dose produced a systemic exposure approximately 2 times the adult human exposure at the RHD of 150 mg. Treatment with aprepitant produced skin fibrosarcomas at 125 and 500 mg/kg/day doses in male mice. Carcinogenicity studies were not conducted with fosaprepitant.

#### Mutagenesis



Aprepitant and fosaprepitant were not genotoxic in the Ames test, the human lymphoblastoid cell (TK6) mutagenesis test, the rat hepatocyte DNA strand break test, the Chinese hamster ovary (CHO) cell chromosome aberration test and the mouse micronucleus test.

#### Impairment of Fertility

Fosaprepitant, when administered intravenously, is rapidly converted to aprepitant. In the fertility studies conducted with fosaprepitant and aprepitant, the highest systemic exposures to aprepitant were obtained following oral administration of aprepitant. Oral aprepitant did not affect the fertility or general reproductive performance of male or female rats at doses up to the maximum feasible dose of 1000 mg/kg twice daily (providing exposure in male rats lower than the exposure at the recommended adult human dose of 150 mg and exposure in female rats approximately equivalent to the adult human exposure).

## 14 CLINICAL STUDIES

### 14.1 Prevention of Nausea and Vomiting Associated with HEC in Adults

In a randomized, parallel, double-blind, active-controlled study, EMEND for injection 150 mg as a single intravenous infusion (N=1147) was compared to a 3-day oral EMEND regimen (N=1175) in patients receiving a HEC regimen that included cisplatin ( $\geq 70$  mg/m<sup>2</sup>). All patients in both groups received dexamethasone and ondansetron (see Table 11). Patient demographics were similar between the two treatment groups. Of the total 2322 patients, 63% were men, 56% White, 26% Asian, 3% American Indian/Alaska Native, 2% Black, 13% Multi-Racial, and 33% Hispanic/Latino ethnicity. Patient ages ranged from 19 to 86 years of age, with a mean age of 56 years. Other concomitant chemotherapy agents commonly administered were fluorouracil (17%), gemcitabine (16%), paclitaxel (15%), and etoposide (12%).

**Table 11**  
**Treatment Regimens in Adult HEC Trial\***

	Day 1	Day 2	Day 3	Day 4
EMEND Regimen				
EMEND for injection	150 mg intravenously over 20 to 30 minutes approximately 30 minutes prior to chemotherapy	none	none	none
Oral dexamethasone <sup>†</sup>	12 mg	8 mg	8 mg twice daily	8 mg twice daily
Ondansetron	Ondansetron <sup>‡</sup>	none	none	none
Oral EMEND Regimen				
EMEND capsules	125 mg	80 mg	80 mg	none
Oral dexamethasone <sup>§</sup>	12 mg	8 mg	8 mg	8 mg
Ondansetron	Ondansetron <sup>‡</sup>	none	none	none

\*EMEND for injection placebo, EMEND capsules placebo and dexamethasone placebo (in the evenings on Days 3 and 4) were used to maintain blinding.

<sup>†</sup>Dexamethasone was administered 30 minutes prior to chemotherapy treatment on Day 1 and in the morning on Days 2 through 4. Dexamethasone was also administered in the evenings on Days 3 and 4. The 12 mg dose of dexamethasone on Day 1 and the 8 mg once daily dose on Day 2 reflects a dosage adjustment to account for a drug interaction with the EMEND for injection regimen [see *Clinical Pharmacology* (12.3)].

<sup>‡</sup>Ondansetron 32 mg intravenous was used in the clinical trials of EMEND. Although this dose was used in clinical trials, this is no longer the currently recommended dose. Refer to the ondansetron prescribing information for the current recommended dose.

<sup>§</sup>Dexamethasone was administered 30 minutes prior to chemotherapy treatment on Day 1 and in the morning on Days 2 through 4. The 12 mg dose of dexamethasone on Day 1 and the 8 mg once daily dose on Days 2 through 4 reflects a dosage adjustment to account for a drug interaction with the oral EMEND regimen [see *Clinical Pharmacology* (12.3)].

The efficacy of EMEND for injection was evaluated based on the primary and secondary endpoints listed in Table 12 and was shown to be non-inferior to that of the 3-day oral aprepitant regimen with regard to complete response in each of the evaluated phases. The pre-specified non-inferiority margin for

complete response in the overall phase was 7%. The pre-specified non-inferiority margin for complete response in the delayed phase was 7.3%. The pre-specified non-inferiority margin for no vomiting in the overall phase was 8.2%.

**Table 12**  
Percent of Adult Patients Receiving HEC Responding by Treatment Group and Phase —  
Cycle 1

ENDPOINTS	EMEND for Injection Regimen (N = 1106)* %	Oral EMEND Regimen (N = 1134)* %	Difference <sup>†</sup> (95% CI)
PRIMARY ENDPOINT			
Complete Response <sup>‡</sup>			
Overall <sup>§</sup>	71.9	72.3	-0.4 (-4.1, 3.3)
SECONDARY ENDPOINTS			
Complete Response <sup>‡</sup>			
Delayed phase <sup>¶</sup>	74.3	74.2	0.1 (-3.5, 3.7)
No Vomiting			
Overall <sup>§</sup>	72.9	74.6	-1.7 (-5.3, 2.0)

\*N: Number of patients included in the primary analysis of complete response.

<sup>†</sup>Difference and Confidence interval (CI) were calculated using the method proposed by Miettinen and Nurminen and adjusted for Gender.

<sup>‡</sup>Complete Response = no vomiting and no use of rescue therapy.

<sup>§</sup>Overall = 0 to 120 hours post-initiation of cisplatin chemotherapy.

<sup>¶</sup>Delayed phase = 25 to 120 hours post-initiation of cisplatin chemotherapy.

## 14.2 Prevention of Nausea and Vomiting Associated with MEC in Adults

In a randomized, parallel, double-blind, active comparator-controlled study, EMEND for injection 150 mg as a single intravenous infusion (N=502) in combination with ondansetron and dexamethasone (EMEND regimen) was compared with ondansetron and dexamethasone alone (standard therapy) (N=498) (see Table 13) in patients receiving a MEC regimen. Patient demographics were similar between the two treatment groups. Of the total 1,000 patients included in the efficacy analysis, 41% were men, 84% White, 4% Asian, 1% American Indian/Alaska Native, 2% Black, 10% Multi-Racial, and 19% Hispanic/Latino ethnicity. Patient ages ranged from 23 to 88 years of age, with a mean age of 60 years. The most commonly administered MEC chemotherapeutic agents were carboplatin (51%), oxaliplatin (24%), and cyclophosphamide (12%).

**Table 13**  
Treatment Regimens in Adult MEC Trial\*

EMEND Regimen	Day 1	Day 2	Day 3
EMEND for Injection	150 mg intravenously over 20 to 30 minutes approximately 30 minutes prior to chemotherapy	none	none
Oral Dexamethasone <sup>†</sup>	12 mg	none	none
Oral Ondansetron <sup>‡</sup>	8 mg for 2 doses	none	none
Standard Therapy			
Oral Dexamethasone	20 mg	none	none
Oral Ondansetron <sup>‡</sup>	8 mg for 2 doses	8 mg twice daily	8 mg twice daily

\*EMEND for injection placebo and dexamethasone placebo (on Day 1) were used to maintain blinding.

<sup>†</sup>Dexamethasone was administered 30 minutes prior to chemotherapy treatment on Day 1. The 12 mg dose reflects a dosage adjustment to account

for a drug interaction with the EMEND for injection regimen [see *Clinical Pharmacology* (12.3)].

\*The first ondansetron dose was administered 30 to 60 minutes prior to chemotherapy treatment on Day 1 and the second dose was administered 8 hours after first ondansetron dose.

The primary endpoint was complete response (defined as no vomiting and no rescue therapy) in the delayed phase (25 to 120 hours) of chemotherapy-induced nausea and vomiting. The results by treatment group are shown in Table 14.

**Table 14**  
**Percent of Adult Patients Receiving MEC Responding by Treatment Group**

ENDPOINTS	EMEND for Injection Regimen (N = 502)* %	Standard Therapy Regimen (N = 498)* %	P-Value	Treatment Difference (95% CI)
PRIMARY ENDPOINT				
Complete Response <sup>†</sup>				
Delayed phase <sup>‡</sup>	78.9	68.5	<0.001	10.4 (5.1, 15.9)

\*N: Number of patients included in the intention to treat population.

<sup>†</sup>Complete Response = no vomiting and no use of rescue therapy.

<sup>‡</sup>Delayed phase = 25 to 120 hours post-initiation of chemotherapy.

## 16 HOW SUPPLIED/STORAGE AND HANDLING

No. 3061 — Single-dose glass vial containing 150 mg of fosaprepitant as a white to off-white lyophilized powder for reconstitution. Supplied as follows:

NDC 0006-3061-00 1 vial per carton.

### *Storage*

Emend for injection vials must be refrigerated, store at 2°C-8°C (36°F-46°F).

The reconstituted final drug solution is stable for 24 hours at ambient room temperature [at or below 25°C (77°F)].

## 17 PATIENT COUNSELING INFORMATION

Advise the patient to read the FDA-approved patient labeling (Patient Information).

### Hypersensitivity

Advise patients that hypersensitivity reactions, including anaphylaxis and anaphylactic shock, have been reported in patients taking EMEND. Advise patients to seek immediate medical attention if they experience signs or symptoms of a hypersensitivity reaction, such as hives, rash and itching, skin peeling or sores, flushing, difficulty in breathing or swallowing, or dizziness, rapid or weak heartbeat or feeling faint [see *Warnings and Precautions* (5.2)].

### Infusion Site Reactions

Advise patients to seek medical attention if they experience new or worsening signs or symptoms of an infusion site reaction, such as erythema, edema, pain, necrosis, vasculitis, or thrombophlebitis at or near the infusion site [see *Warnings and Precautions* (5.3)].

### Drug Interactions

Advise patients to discuss all medications they are taking, including other prescription, non-prescription medication or herbal products [see *Contraindications* (4), *Warnings and Precautions* (5.1)].

**Warfarin:** Instruct patients on chronic warfarin therapy to follow instructions from their healthcare provider regarding blood draws to monitor their INR during the 2-week period, particularly at 7 to 10 days, following initiation of EMEND with each chemotherapy cycle [see *Warnings and Precautions* (5.4)].

*Hormonal Contraceptives:* Advise patients that administration of EMEND may reduce the efficacy of hormonal contraceptives. Instruct patients to use effective alternative or back-up methods of contraception (such as condoms and spermicides) during treatment with EMEND and for 1 month following administration of EMEND [see *Warnings and Precautions (5.5), Use in Specific Populations (8.3)*].

---

Manufactured for:

Merck Sharp & Dohme Corp., a subsidiary of **MERCK & CO., INC.**, Whitehouse Station, NJ 08889, USA

Manufactured by:

Patheon Manufacturing Services LLC, 5900 Martin Luther King Jr. Highway, Greenville, NC 27834, USA

For patent information: [www.merck.com/product/patent/home.html](http://www.merck.com/product/patent/home.html)

Copyright © 2008-2018 Merck Sharp & Dohme Corp., a subsidiary of **Merck & Co., Inc.**  
All rights reserved.

uspi-mk0517-iv-edta5-1804r004