

# FACT SHEET FOR HEALTHCARE PROVIDERS: EMERGENCY USE AUTHORIZATION FOR LAGEVRIO™ (molnupiravir) CAPSULES

## HIGHLIGHTS OF EMERGENCY USE AUTHORIZATION (EUA)

These highlights of the EUA do not include all the information needed to use LAGEVRIO under the EUA. See the FULL FACT SHEET FOR HEALTHCARE PROVIDERS for LAGEVRIO.

LAGEVRIO™ (molnupiravir) capsules, for oral use

Original EUA Authorized Date: 12/23/2021

Revised EUA Authorized Date: 06/2022

### MANDATORY REQUIREMENTS FOR ADMINISTRATION OF LAGEVRIO UNDER EMERGENCY USE AUTHORIZATION

Refer to FULL FACTSHEET for details.

### RECENT MAJOR CHANGES

Mandatory Requirements Box: Revised requirements pertaining to other therapeutics	02/2022
Emergency Use Authorization (Section 1): Updates on available alternatives to LAGEVRIO	02/2022
Warnings and Precautions (Sections 5.2 and 17): addition of hypersensitivity including anaphylaxis	02/2022
Adverse Reactions (Section 6.2): addition of post-authorization experience section	02/2022

### EUA FOR LAGEVRIO

The U.S. Food and Drug Administration (FDA) has issued an EUA for the emergency use of the unapproved LAGEVRIO, a nucleoside analogue that inhibits SARS-CoV-2 replication by viral mutagenesis for the treatment of mild-to-moderate coronavirus disease 2019 (COVID-19) in adults with positive results of direct SARS-CoV-2 viral testing who are at high risk for progression to severe COVID-19, including hospitalization or death, and for whom alternative COVID-19 treatment options approved or authorized by FDA are not accessible or clinically appropriate. LAGEVRIO is not FDA-approved for any use including for use for the treatment of COVID-19. Prior to initiating treatment with LAGEVRIO, carefully consider the known and potential risks and benefits. (1)

### LIMITATIONS OF AUTHORIZED USE (1)

- LAGEVRIO is not authorized
  - for use in patients less than 18 years of age (5.3)
  - for initiation of treatment in patients requiring hospitalization due to COVID-19. Benefit of treatment with LAGEVRIO has not been observed in subjects when treatment was initiated after hospitalization due to COVID-19. (2.1)
  - for use for longer than 5 consecutive days.
  - for pre-exposure or post-exposure prophylaxis for prevention of COVID-19.

LAGEVRIO may only be prescribed for an individual patient by physicians, advanced practice registered nurses, and physician assistants that are licensed or authorized under state law to prescribe drugs in the therapeutic class to which LAGEVRIO belongs (i.e., anti-infectives).

LAGEVRIO is authorized only for the duration of the declaration that circumstances exist justifying the authorization of the emergency use of LAGEVRIO under section 564(b)(1) of the Act, 21 U.S.C. § 360bbb-3(b)(1), unless the authorization is terminated or revoked sooner.

See the box in the beginning of the Full Fact Sheet for details on mandatory requirements for administration of LAGEVRIO under emergency use authorization.

See Full Fact Sheet for Healthcare Providers for the justification for emergency use of drugs during the COVID-19 pandemic, information on available alternatives, and additional information on COVID-19.

### DOSAGE AND ADMINISTRATION

- 800 mg (four 200 mg capsules) taken orally every 12 hours for 5 days, with or without food. (2.1)
- Take LAGEVRIO as soon as possible after a diagnosis of COVID-19 has been made, and within 5 days of symptom onset. (2.1)
- Completion of the full 5-day treatment course and continued isolation in accordance with public health recommendations are important to maximize viral clearance and minimize transmission of SARS-CoV-2. (2.1)
- LAGEVRIO is not authorized for use for longer than 5 consecutive days because the safety and efficacy have not been established. (2.1)

### DOSAGE FORMS AND STRENGTHS

Capsules: 200 mg (3)

### CONTRAINDICATIONS

No contraindications have been identified based on the limited available data on the emergency use of LAGEVRIO authorized under this EUA. (4)

### WARNINGS AND PRECAUTIONS

- Embryo-Fetal Toxicity:** LAGEVRIO is not recommended for use during pregnancy. (5.1, 8.1, 8.3)
- Hypersensitivity reactions,** including anaphylaxis have been reported with LAGEVRIO. If signs and symptoms of a clinically significant hypersensitivity reaction or anaphylaxis occur, immediately discontinue LAGEVRIO. (5.2)
- Bone and Cartilage Toxicity:** LAGEVRIO is not authorized for use in patients less than 18 years of age because it may affect bone and cartilage growth. (5.3, 8.4, 13.2)

### ADVERSE REACTIONS

Most common adverse reactions (incidence  $\geq$  1%) are diarrhea, nausea, and dizziness. (6.1)

**You or your designee must report all SERIOUS ADVERSE EVENTS or MEDICATION ERRORS potentially related to LAGEVRIO (1) by submitting FDA Form 3500 [online](#), (2) by [downloading](#) this form and then submitting by mail or fax, or (3) contacting the FDA at 1-800-FDA-1088 to request this form. Please also provide a copy of this form to Merck Sharp & Dohme LLC, Rahway, NJ USA at 1-800-672-6372 or Fax 215-616-5677 (6.4)**

### DRUG INTERACTIONS

No drug interactions have been identified based on the limited available data on the emergency use of LAGEVRIO authorized under this EUA. (7)

### USE IN SPECIFIC POPULATIONS

- Pregnancy:** The use of LAGEVRIO is not recommended during pregnancy. Advise individuals of childbearing potential to use effective contraception correctly and consistently, as applicable, for the duration of treatment and for 4 days after the last dose of LAGEVRIO. (8.1, 8.3)
- Lactation:** Breastfeeding is not recommended during treatment and for 4 days after the last dose of LAGEVRIO. A lactating individual may consider interrupting breastfeeding and may consider pumping and discarding breast milk during treatment and for 4 days after the last dose of LAGEVRIO. (8.2)

**See FACT SHEET FOR PATIENTS AND CAREGIVERS.**

---

**TABLE OF CONTENTS\***

**MANDATORY REQUIREMENTS FOR  
ADMINISTRATION OF LAGEVRIO UNDER  
EMERGENCY USE AUTHORIZATION**

**1 EMERGENCY USE AUTHORIZATION**

**2 DOSAGE AND ADMINISTRATION**

2.1 Dosage for Emergency Use of  
LAGEVRIO in Adult Patients

2.2 Dosage Adjustments in Specific  
Populations

**3 DOSAGE FORMS AND STRENGTHS**

**4 CONTRAINDICATIONS**

**5 WARNINGS AND PRECAUTIONS**

5.1 Embryo-Fetal Toxicity

5.2 Hypersensitivity Including Anaphylaxis

5.3 Bone and Cartilage Toxicity

**6 ADVERSE REACTIONS**

6.1 Adverse Reactions from Clinical Studies

6.2 Post-Authorization Experience

6.4 Required Reporting for Serious Adverse  
Events and Medication Errors

6.5 Other Reporting Requirements

**7 DRUG INTERACTIONS**

**8 USE IN SPECIFIC POPULATIONS**

8.1 Pregnancy

8.2 Lactation

8.3 Females and Males of Reproductive  
Potential

8.4 Pediatric Use

8.5 Geriatric Use

8.6 Renal Impairment

8.7 Hepatic Impairment

**10 OVERDOSAGE**

**11 DESCRIPTION**

**12 CLINICAL PHARMACOLOGY**

12.1 Mechanism of Action

12.2 Pharmacodynamics

12.3 Pharmacokinetics

12.4 Microbiology

**13 NONCLINICAL TOXICOLOGY**

13.1 Carcinogenesis, Mutagenesis,  
Impairment of Fertility

13.2 Animal Toxicology and/or Pharmacology

**14 CLINICAL STUDIES**

**16 HOW SUPPLIED/STORAGE AND HANDLING**

**17 PATIENT COUNSELING INFORMATION**

**18 MANUFACTURER INFORMATION**

\* Sections or subsections omitted from the EUA are not  
listed

---

## FULL FACT SHEET FOR HEALTHCARE PROVIDERS

### MANDATORY REQUIREMENTS FOR ADMINISTRATION OF LAGEVRIO UNDER EMERGENCY USE AUTHORIZATION

In order to mitigate the risks of using this unapproved product under the EUA and to optimize the potential benefit of LAGEVRIO, the following steps are required. Use of LAGEVRIO under this EUA is limited to the following (all requirements must be met):

1. Treatment of mild-to-moderate COVID-19 in adults with a positive result of direct severe acute respiratory syndrome coronavirus 2 (SARS-CoV-2) viral testing, who are at high risk for progression to severe COVID-19, including hospitalization or death and for whom alternative COVID-19 treatment options approved or authorized by FDA are not accessible or clinically appropriate [see *Limitations of Authorized Use (1)*].
2. As the prescribing healthcare provider, review the information contained within the “Fact Sheet for Patients and Caregivers” with your patient or caregiver prior to the patient receiving LAGEVRIO. Healthcare providers must provide the patient/caregiver with an electronic or hard copy of the “Fact Sheet for Patients and Caregivers” prior to the patient receiving LAGEVRIO and must document that the patient/caregiver has been given an electronic or hard copy of the “Fact Sheet for Patients and Caregivers”.
3. The prescribing healthcare providers must inform the patient/caregiver that:
  - i. LAGEVRIO is an unapproved drug that is authorized for use under this Emergency Use Authorization.
  - ii. Other therapeutics are currently approved or authorized for the same use as LAGEVRIO. [see *Emergency Use Authorization (1) - Information Regarding Available Alternatives for the EUA Authorized Use*].
  - iii. There are benefits and risks of taking LAGEVRIO as outlined in the “Fact Sheet for Patients and Caregivers.”
  - iv. Merck Sharp & Dohme has established a pregnancy surveillance program.
  - v. Females of childbearing potential should use a reliable method of contraception correctly and consistently, as applicable, for the duration of treatment and for 4 days after the last dose of LAGEVRIO.
  - vi. Males of reproductive potential who are sexually active with females of childbearing potential should use a reliable method of contraception correctly and consistently during treatment and for at least 3 months after the last dose.
4. The prescribing healthcare provider must assess whether a female of childbearing potential is pregnant or not, if clinically indicated [see *Warnings and Precautions (5.1) and Use in Specific Populations (8.3)*].
5. Based on findings from animal reproduction studies, LAGEVRIO may cause fetal harm when administered to pregnant individuals. If LAGEVRIO is used during pregnancy, prescribing healthcare providers must communicate to the patient the known and potential benefits and the potential risks of LAGEVRIO use during pregnancy, as outlined in the “Fact Sheet for Patients and Caregivers” [see *Warnings and Precautions (5.1, 5.3), Use in Specific Populations (8.1, 8.3) and Nonclinical Toxicology (13.1)*].
6. If the decision is made to use LAGEVRIO during pregnancy, the prescriber must document that the known and potential benefits and the potential risks of LAGEVRIO use during pregnancy, as outlined in the “Fact Sheet for Patients and Caregivers,” were discussed with the patient.

7. The prescribing healthcare provider must document that a pregnant individual was made aware of Merck Sharp & Dohme's pregnancy surveillance program at 1-877-888-4231 or pregnancyreporting.msd.com.
  - a. If the pregnant individual agrees to participate in the pregnancy surveillance program and allows the prescribing healthcare provider to disclose patient specific information to Merck Sharp & Dohme, the prescribing healthcare provider must provide the patient's name and contact information to Merck Sharp & Dohme.
  
8. The prescribing healthcare provider and/or the provider's designee is/are responsible for mandatory reporting of all medication errors and serious adverse events potentially related to LAGEVRIO within 7 calendar days from the healthcare provider's awareness of the event [see *Adverse Reactions (6.4)*].

For information on clinical studies of LAGEVRIO and other therapies for the treatment of COVID-19, see [www.clinicaltrials.gov](http://www.clinicaltrials.gov).

### **1 EMERGENCY USE AUTHORIZATION**

The U.S. Food and Drug Administration (FDA) has issued an Emergency Use Authorization (EUA) to permit the emergency use of the unapproved product LAGEVRIO™ for treatment of mild-to-moderate COVID-19 in adults:

- with positive results of direct SARS-CoV-2 viral testing, and
- who are at high risk for progression to severe COVID-19, including hospitalization or death. Refer to CDC website<sup>1</sup> for additional details, and for
- whom alternative COVID-19 treatment options approved or authorized by FDA are not accessible or clinically appropriate.

### **LIMITATIONS OF AUTHORIZED USE**

- LAGEVRIO is not authorized for use in patients who are less than 18 years of age [see *Warnings and Precautions (5.3)*].
- LAGEVRIO is not authorized for initiation of treatment in patients hospitalized due to COVID-19<sup>2</sup>. Benefit of treatment with LAGEVRIO has not been observed in subjects when treatment was initiated after hospitalization due to COVID-19 [see *Dosing and Administration (2.1)*].
- LAGEVRIO is not authorized for use for longer than 5 consecutive days.
- LAGEVRIO is not authorized for pre-exposure or post-exposure prophylaxis for prevention of COVID-19.

LAGEVRIO may only be prescribed for an individual patient by physicians, advanced practice registered nurses, and physician assistants that are licensed or authorized under state law to prescribe drugs in the therapeutic class to which LAGEVRIO belongs (i.e., anti-infectives).

LAGEVRIO is not approved for any use, including for use for the treatment of COVID-19.

Prior to initiating treatment with LAGEVRIO, carefully consider the known and potential risks and benefits [see *Warnings and Precautions (5.1, 5.3)*, *Use in Specific Populations (8.1, 8.3)* and *Nonclinical Toxicology (13.1)*].

---

<sup>1</sup> <https://www.cdc.gov/coronavirus/2019-ncov/need-extra-precautions/people-with-medical-conditions.html>. Healthcare providers should consider the benefit-risk for an individual patient.

<sup>2</sup> Should a patient require hospitalization after starting treatment with LAGEVRIO, the patient may complete the full 5 day treatment course per the healthcare provider's discretion.

LAGEVRIO is authorized only for the duration of the declaration that circumstances exist justifying the authorization of the emergency use of LAGEVRIO under section 564(b)(1) of the Act, 21 U.S.C. § 360bbb-3(b)(1), unless the authorization is terminated or revoked sooner.

#### Justification for Emergency Use of Drugs During the COVID-19 Pandemic

There is currently an outbreak of Coronavirus Disease 2019 (COVID-19) caused by SARS-CoV-2, a novel coronavirus. The Secretary of HHS has declared that:

- A public health emergency related to COVID-19 has existed since January 27, 2020.
- Circumstances exist justifying the authorization of emergency use of drugs and biological products during the COVID-19 pandemic (March 27, 2020 declaration).

An EUA is a FDA authorization for the emergency use of an unapproved product or unapproved use of an approved product (i.e., drug, biological product, or device) in the United States under certain circumstances including, but not limited to, when the Secretary of HHS declares that there is a public health emergency that affects the national security or the health and security of United States citizens living abroad, and that involves biological agent(s) or a disease or condition that may be attributable to such agent(s). Criteria for issuing an EUA include:

- The biological agent(s) can cause a serious or life-threatening disease or condition;
- Based on the totality of the available scientific evidence (including data from adequate and well-controlled clinical trials, if available), it is reasonable to believe that
  - the product may be effective in diagnosing, treating, or preventing the serious or life-threatening disease or condition; and
  - the known and potential benefits of the product - when used to diagnose, prevent, or treat such disease or condition - outweigh the known and potential risks of the product, taking into consideration the material threat posed by the biological agent(s);
- There is no adequate, approved, and available alternative to the product for diagnosing, preventing, or treating the serious or life-threatening disease or condition.

#### APPROVED AVAILABLE ALTERNATIVES

Veklury (remdesivir) is FDA-approved for the treatment of COVID-19 in adults and pediatric patients (12 years of age and older weighing at least 40 kg) with positive results of direct SARS-CoV-2 viral testing, who are not hospitalized and have mild-to-moderate COVID-19, and who are at high risk for progression to severe COVID-19, including hospitalization or death. Veklury is administered via intravenous infusion for a total treatment duration of 3 days.

Although Veklury is an approved alternative treatment of mild-to-moderate COVID-19 in adults with positive results of direct SARS-CoV-2 viral testing, and who are at high risk for progression to severe COVID-19, including hospitalization or death, FDA does not consider Veklury to be an adequate alternative to LAGEVRIO for this authorized use because it may not be feasible or practical for certain patients (e.g., it requires an intravenous infusion daily for three days).

Other therapeutics are currently authorized for the same use as LAGEVRIO. For additional information on all products authorized for treatment or prevention of COVID-19, please see <https://www.fda.gov/emergency-preparedness-and-response/mcm-legal-regulatory-and-policy-framework/emergency-use-authorization> .

For information on clinical studies of LAGEVRIO and other therapies for the treatment of COVID-19, see [www.clinicaltrials.gov](http://www.clinicaltrials.gov).

## **2 DOSAGE AND ADMINISTRATION**

### **2.1 Dosage for Emergency Use of LAGEVRIO in Adult Patients**

The dosage in adult patients is 800 mg (four 200 mg capsules) taken orally every 12 hours for 5 days, with or without food [see *Clinical Pharmacology (12.3)*]. Take LAGEVRIO as soon as possible after a diagnosis of COVID-19 has been made, and within 5 days of symptom onset [see *Emergency Use Authorization (1) and Clinical Studies (14)*].

Completion of the full 5-day treatment course and continued isolation in accordance with public health recommendations are important to maximize viral clearance and minimize transmission of SARS-CoV-2 [see *Patient Counseling Information (17)*].

LAGEVRIO is not authorized for use for longer than 5 consecutive days because the safety and efficacy have not been established.

If the patient misses a dose of LAGEVRIO within 10 hours of the time it is usually taken, the patient should take it as soon as possible and resume the normal dosing schedule. If the patient misses a dose by more than 10 hours, the patient should not take the missed dose and instead take the next dose at the regularly scheduled time. The patient should not double the dose to make up for a missed dose.

Should a patient require hospitalization after starting treatment with LAGEVRIO, the patient may complete the full 5 day treatment course per the healthcare provider's discretion.

## **2.2 Dosage Adjustments in Specific Populations**

No dosage adjustment is recommended based on renal or hepatic impairment or in geriatric patients [see *Use in Specific Populations (8.5, 8.6, 8.7)*].

## **3 DOSAGE FORMS AND STRENGTHS**

Capsules: 200 mg, Swedish Orange opaque size 0 capsules. The capsules have the corporate logo and "82" printed in white ink.

## **4 CONTRAINDICATIONS**

No contraindications have been identified based on the limited available data on the emergency use of LAGEVRIO authorized under this EUA.

## **5 WARNINGS AND PRECAUTIONS**

There are limited clinical data available for LAGEVRIO. Serious and unexpected adverse events may occur that have not been previously reported with LAGEVRIO use.

### **5.1 Embryo-Fetal Toxicity**

Based on findings from animal reproduction studies, LAGEVRIO may cause fetal harm when administered to pregnant individuals. There are no available human data on the use of LAGEVRIO in pregnant individuals to evaluate the risk of major birth defects, miscarriage or adverse maternal or fetal outcomes; therefore, LAGEVRIO is not recommended for use during pregnancy. When considering LAGEVRIO for a pregnant individual, the prescribing healthcare provider must communicate the known and potential benefits and the potential risks of using LAGEVRIO during pregnancy to the pregnant individual. LAGEVRIO is authorized to be prescribed to a pregnant individual only after the healthcare provider has determined that the benefits would outweigh the risks for that individual patient. If the decision is made to use LAGEVRIO during pregnancy, the prescribing healthcare provider must document that the known and potential benefits and the potential risks of using LAGEVRIO during pregnancy were communicated to the pregnant individual.

Advise individuals of childbearing potential of the potential risk to a fetus and to use an effective method of contraception correctly and consistently, as applicable, during treatment with LAGEVRIO and for 4 days after the final dose [see *Use in Specific Populations (8.1, 8.3 and Nonclinical Toxicology (13.1))*].

Prior to initiating treatment with LAGEVRIO, assess whether an individual of childbearing potential is pregnant or not, if clinically indicated. Pregnancy status does not need to be confirmed in patients who have undergone permanent sterilization, are currently using an intrauterine system or contraceptive implant, or in whom pregnancy is not possible. In all other patients, assess whether the patient is pregnant based on the first day of last menstrual period in individuals who have regular menstrual cycles, is using a reliable method of contraception correctly and consistently or have had a negative pregnancy test. A pregnancy test is recommended if the individual has irregular menstrual cycles, is unsure of the first day of last menstrual period or is not using effective contraception correctly and consistently [see Box].

## 5.2 Hypersensitivity Including Anaphylaxis

Hypersensitivity reactions, including anaphylaxis, have been reported with LAGEVRIO. If signs and symptoms of a clinically significant hypersensitivity reaction or anaphylaxis occur, immediately discontinue LAGEVRIO and initiate appropriate medications and/or supportive care.

## 5.3 Bone and Cartilage Toxicity

LAGEVRIO is not authorized for use in patients less than 18 years of age because it may affect bone and cartilage growth. Bone and cartilage toxicity was observed in rats after repeated dosing [see *Nonclinical Toxicity (13.2)*]. The safety and efficacy of LAGEVRIO have not been established in pediatric patients [see *Use in Specific Populations (8.4)*].

## 6 ADVERSE REACTIONS

### 6.1 Adverse Reactions from Clinical Studies

The following adverse reactions have been observed in the clinical study of LAGEVRIO that supported the EUA. The adverse reaction rates observed in these clinical trials cannot be directly compared to rates in the clinical trials of another drug and may not reflect the rates observed in practice. Additional adverse events associated with LAGEVRIO may become apparent with more widespread use.

Overall, more than 900 subjects have been exposed to LAGEVRIO 800 mg twice daily in clinical trials. The safety assessment of LAGEVRIO is primarily based on an analysis from subjects followed through Day 29 in the Phase 3 study in non-hospitalized subjects with COVID-19 (MOVE-OUT) [see *Clinical Studies (14)*].

The safety of LAGEVRIO was evaluated based on an analysis of a Phase 3 double-blind trial (MOVE-OUT) in which 1,411 non-hospitalized subjects with COVID-19 were randomized and treated with LAGEVRIO (N=710) or placebo (N=701) for up to 5 days. Adverse events were those reported while subjects were on study intervention or within 14 days of study intervention completion/discontinuation.

Discontinuation of study intervention due to an adverse event occurred in 1% of subjects receiving LAGEVRIO and 3% of subjects receiving placebo. Serious adverse events occurred in 7% of subjects receiving LAGEVRIO and 10% receiving placebo; most serious adverse events were COVID-19 related. Adverse events leading to death occurred in 2 (<1%) subjects receiving LAGEVRIO and 12 (2%) of subjects receiving placebo.

The most common adverse reactions in the LAGEVRIO treatment group in MOVE-OUT are presented in Table 1, all of which were Grade 1 (mild) or Grade 2 (moderate).

**Table 1: Adverse Reactions Occurring in Greater Than or Equal to 1% of Subjects Receiving LAGEVRIO in MOVE-OUT\***

	LAGEVRIO N=710	Placebo N=701
Diarrhea	2%	2%
Nausea	1%	1%

Dizziness	1%	1%
*Frequencies of adverse reactions are based on all adverse events attributed to study intervention by the investigator.		

#### *Laboratory Abnormalities*

Selected Grade 3 and 4 laboratory abnormalities in chemistry (alanine aminotransferase, aspartate aminotransferase, creatinine, and lipase) and hematology (hemoglobin, platelets, and leukocytes) parameters all occurred at a rate of less than or equal to 2% and occurred at a similar rate across arms in MOVE-OUT.

#### **6.2 Post-Authorization Experience**

The following adverse reactions have been identified during post-authorization use of LAGEVRIO. Because these reactions are reported voluntarily from a population of uncertain size, it is not always possible to reliably estimate their frequency or establish a causal relationship to drug exposure.

#### *Immune System Disorders*

hypersensitivity, anaphylaxis, angioedema [see *Warnings and Precautions (5.2)*]

#### *Skin and Subcutaneous Tissue Disorders*

erythema, rash, urticaria

#### **6.4 Required Reporting for Serious Adverse Events and Medication Errors**

The prescribing healthcare provider and/or the provider's designee is/are responsible for mandatory reporting of all serious adverse events\* and medication errors potentially related to LAGEVRIO within 7 calendar days from the healthcare provider's awareness of the event, using FDA Form 3500 (for information on how to access this form, see below). The FDA requires that such reports, using FDA Form 3500, include the following:

- Patient demographics and baseline characteristics (e.g., patient identifier, age or date of birth, gender, weight, ethnicity, and race)
- A statement "LAGEVRIO use for COVID-19 under Emergency Use Authorization (EUA)" under the "**Describe Event, Problem, or Product Use/Medication Error**" heading
- Information about the serious adverse event or medication error (e.g., signs and symptoms, test/laboratory data, complications, timing of drug initiation in relation to the occurrence of the event, duration of the event, treatments required to mitigate the event, evidence of event improvement/disappearance after stopping or reducing the dosage, evidence of event reappearance after reintroduction, clinical outcomes).
- Patient's preexisting medical conditions and use of concomitant products
- Information about the product (e.g., dosage, route of administration, NDC #).

Submit adverse event and medication error reports, using Form 3500, to FDA MedWatch using one of the following methods:

- Complete and submit the report online: [www.fda.gov/medwatch/report.htm](http://www.fda.gov/medwatch/report.htm)
- Complete and submit a postage-paid FDA Form 3500 (<https://www.fda.gov/media/76299/download>) and return by:
  - Mail to MedWatch, 5600 Fishers Lane, Rockville, MD 20852-9787, or
  - Fax to 1-800-FDA-0178, or
- Call 1-800-FDA-1088 to request a reporting form

In addition, please provide a copy of all FDA MedWatch forms to:

Merck Sharp & Dohme LLC, Rahway, NJ USA

Fax: 215-616-5677

E-mail: [dpoc.usa@msd.com](mailto:dpoc.usa@msd.com)



The prescribing healthcare provider and/or the provider's designee is/are responsible for mandatory responses to requests from FDA for information about adverse events and medication errors following receipt of LAGEVRIO.

\*Serious adverse events are defined as:

- Death;
- A life-threatening adverse event;
- Inpatient hospitalization or prolongation of existing hospitalization;
- A persistent or significant incapacity or substantial disruption of the ability to conduct normal life functions;
- A congenital anomaly/birth defect;
- Other important medical event, which may require a medical or surgical intervention to prevent death, a life-threatening event, hospitalization, disability, or congenital anomaly.

### **6.5 Other Reporting Requirements**

Healthcare facilities and providers will report therapeutics information and utilization data as directed by the U.S. Department of Health and Human Services.

### **7 DRUG INTERACTIONS**

No drug interactions have been identified based on the limited available data on the emergency use of LAGEVRIO authorized under this EUA. No clinical drug-drug interaction trials of LAGEVRIO with concomitant medications, including other treatments for mild-to-moderate COVID-19, have been conducted [see *Clinical Pharmacology (12.3)*].

### **8 USE IN SPECIFIC POPULATIONS**

#### **8.1 Pregnancy**

##### Pregnancy Surveillance Program

There is a pregnancy surveillance program that monitors pregnancy outcomes in individuals exposed to LAGEVRIO during pregnancy. The prescribing healthcare provider must document that a pregnant individual was made aware of Merck Sharp & Dohme's pregnancy surveillance program at 1-877-888-4231 or pregnancyreporting.msd.com. If the pregnant individual agrees to participate in the pregnancy surveillance program and allows the prescribing healthcare provider to disclose patient specific information to Merck Sharp & Dohme, the prescribing healthcare provider must provide the patient's name and contact information to Merck Sharp & Dohme. Pregnant individuals exposed to LAGEVRIO can also report the exposure by contacting Merck Sharp & Dohme LLC, Rahway, NJ USA at 1-877-888-4231 or pregnancyreporting.msd.com.

##### Risk Summary

Based on animal data, LAGEVRIO may cause fetal harm when administered to pregnant individuals. There are no available human data on the use of LAGEVRIO in pregnant individuals to evaluate the risk of major birth defects, miscarriage or adverse maternal or fetal outcomes; therefore, LAGEVRIO is not recommended during pregnancy [see *Box and Warnings and Precautions (5.1)*]. In an animal reproduction study, oral administration of molnupiravir to pregnant rats during the period of organogenesis resulted in embryofetal lethality and teratogenicity at 8 times the human NHC (N4-hydroxycytidine) exposures at the recommended human dose (RHD) and reduced fetal growth at  $\geq 3$  times the human NHC exposure at the RHD. Oral administration of molnupiravir to pregnant rabbits during the period of organogenesis resulted in reduced fetal body weights at 18 times the human NHC exposure at the RHD (see *Data*). When considering LAGEVRIO for a pregnant individual, the prescribing healthcare provider must communicate the known and potential benefits and the potential risks of using LAGEVRIO during pregnancy to the pregnant individual. LAGEVRIO may only be prescribed to a pregnant individual after the prescribing healthcare provider has determined that the benefits would outweigh the risks for that individual patient. If the decision is made to use LAGEVRIO during pregnancy, the prescribing healthcare provider must document that the known and

potential benefits and potential risks of using LAGEVRIO during pregnancy were communicated to the pregnant individual [see Box]. There are maternal and fetal risks associated with untreated COVID-19 in pregnancy (see *Clinical Considerations*).

The estimated background risk of major birth defects and miscarriage for the indicated population is unknown. All pregnancies have a background risk of birth defect, loss, or other adverse outcomes. In the U.S. general population, the estimated background risk of major birth defects and miscarriage in clinically recognized pregnancies is 2 to 4% and 15 to 20%, respectively.

### Clinical Considerations

#### *Disease-associated maternal and/or embryo/fetal risk*

COVID-19 in pregnancy is associated with adverse maternal and fetal outcomes, including preeclampsia, eclampsia, preterm birth, premature rupture of membranes, venous thromboembolic disease, and fetal death.

### Data

#### *Animal Data*

In an embryofetal development (EFD) study in rats, molnupiravir was administered orally to pregnant rats at 0, 100, 250, or 500 mg/kg/day from gestation days (GDs) 6 to 17. Molnupiravir was also administered orally to pregnant rats at up to 1,000 mg/kg/day from GDs 6 to 17 in a preliminary EFD study. Developmental toxicities included post-implantation losses, malformations of the eye, kidney, and axial skeleton, and rib variations at 1,000 mg/kg/day (8 times the human NHC exposure at the RHD) and decreased fetal body weights and delayed ossification at  $\geq 500$  mg/kg/day (3 times the human NHC exposure at the RHD). There were no developmental toxicities at  $\leq 250$  mg/kg/day (less than the human NHC exposure at the RHD). Maternal toxicities included decreased food consumption and body weight losses, resulting in the early sacrifice of two of sixteen animals at 1,000 mg/kg/day, and decreased body weight gain at 500 mg/kg/day.

In an EFD study in rabbits, molnupiravir was administered orally to pregnant rabbits at 0, 125, 400, or 750 mg/kg/day from GDs 7 to 19. Developmental toxicity was limited to reduced fetal body weights at 750 mg/kg/day (18 times the human NHC exposures at the RHD). There was no developmental toxicity at  $\leq 400$  mg/kg/day (7 times the human NHC exposures at the RHD). Maternal toxicities included reduced food consumption and body weight gains, and abnormal fecal output at 750 mg/kg/day.

In a pre- and post-natal developmental study, molnupiravir was administered orally to female rats at doses up to 500 mg/kg/day (similar to the human NHC exposure at the RHD) from GD6 through lactation day 20. No effects were observed in offspring.

## **8.2 Lactation**

### Risk Summary

There are no data on the presence of molnupiravir or its metabolites in human milk. NHC was detected in the plasma of nursing pups from lactating rats administered molnupiravir (see *Data*). It is unknown whether molnupiravir has an effect on the breastfed infant or effects on milk production.

Based on the potential for adverse reactions in the infant from LAGEVRIO, breastfeeding is not recommended during treatment with LAGEVRIO and for 4 days after the final dose. A lactating individual may consider interrupting breastfeeding and may consider pumping and discarding breast milk during treatment and for 4 days after the last dose of LAGEVRIO [see *Warnings and Precautions* (5.1, 5.3)].

### Data

When molnupiravir was administered to lactating rats at  $\geq 250$  mg/kg/day in the pre- and post-natal development study, NHC was detected in plasma of nursing pups.

### **8.3 Females and Males of Reproductive Potential**

Based on animal studies, LAGEVRIO may cause fetal harm when administered to a pregnant individual.

#### Pregnancy Testing

Prior to initiating treatment with LAGEVRIO, assess whether an individual of childbearing potential is pregnant or not, if clinically indicated [see *Warnings and Precautions (5.1)*].

#### Contraception

##### Females

Advise individuals of childbearing potential to use a reliable method of contraception correctly and consistently, as applicable for the duration of treatment and for 4 days after the last dose of LAGEVRIO [see *Warnings and Precautions (5.1)*].

##### Males

While the risk is regarded as low, nonclinical studies to fully assess the potential for LAGEVRIO to affect offspring of treated males have not been completed. Advise sexually active individuals with partners of childbearing potential to use a reliable method of contraception correctly and consistently during treatment and for at least 3 months after the last dose of LAGEVRIO. The risk beyond three months after the last dose of LAGEVRIO is unknown. Studies to understand the risk beyond three months are ongoing.

Molnupiravir was equivocal (neither clearly positive nor negative) in one *in vivo* mutagenicity assay of reticulocytes and RBCs which are used to reflect prior effects on hematopoietic stem cells in bone marrow. Molnupiravir was not mutagenic when assessed in a second *in vivo* assay of liver (somatic cells) and bone marrow (somatic cells and stem cells) from transgenic rats administered molnupiravir for 28 days. In contrast to somatic cells, germ cells (eggs and sperm) pass genetic information from generation to generation. A planned study of male testicular germ cells from transgenic rats will assess the potential for molnupiravir to affect offspring of treated males [see *Nonclinical Toxicology (13.1)*].

### **8.4 Pediatric Use**

LAGEVRIO is not authorized for use in patients less than 18 years of age.

Bone and cartilage toxicity were observed in a 3-month, repeat-dose toxicology study in rats. The safety and efficacy of LAGEVRIO have not been established in pediatric patients [see *Warnings and Precautions (5.3)* and *Nonclinical Toxicology (13.2)*].

### **8.5 Geriatric Use**

In MOVE-OUT, there was no difference in safety and tolerability between patients  $\geq 65$  years of age and younger patients who were treated with LAGEVRIO. No dosage adjustment is recommended based on age. The PK of NHC was similar in geriatric patients compared to younger patients [see *Clinical Pharmacology (12.3)*].

### **8.6 Renal Impairment**

No dosage adjustment in patients with any degree of renal impairment is recommended. Renal clearance is not a meaningful route of elimination for NHC. Mild or moderate renal impairment did not have a meaningful impact on the PK of NHC. While the PK of NHC has not been evaluated in patients with eGFR less than 30 mL/min/1.73m<sup>2</sup> or on dialysis, severe renal impairment, and end-stage renal disease (ESRD) are not expected to have a significant effect on NHC exposure [see *Clinical Pharmacology (12.3)*].

### **8.7 Hepatic Impairment**

No dosage adjustment in patients with hepatic impairment is recommended. Preclinical data indicate that hepatic elimination is not expected to be a major route of NHC elimination therefore, hepatic impairment is unlikely to affect NHC exposure [see *Clinical Pharmacology (12.3)*].

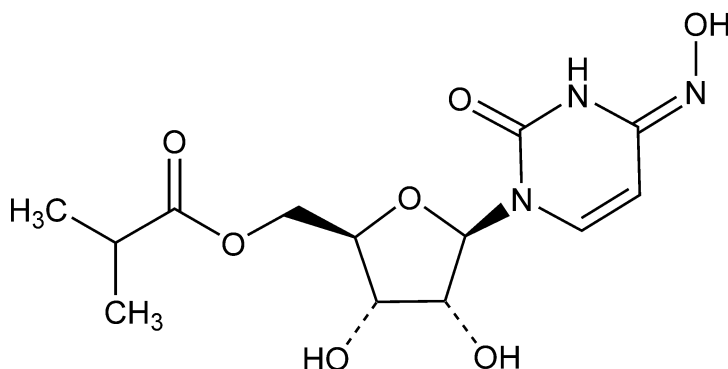
## 10 OVERDOSAGE

There is no human experience of overdose with LAGEVRIO. Treatment of overdose with LAGEVRIO should consist of general supportive measures including the monitoring of the clinical status of the patient. Hemodialysis is not expected to result in effective elimination of NHC.

## 11 DESCRIPTION

LAGEVRIO capsules contain molnupiravir, a nucleoside analogue that inhibits SARS-CoV-2 replication by viral mutagenesis and is the 5'-isobutyrate ester of the ribonucleoside analog N4-hydroxycytidine (NHC).

The chemical name for molnupiravir is {(2R,3S,4R,5R)-3,4-Dihydroxy-5-[(4Z)-4-(hydroxyimino)-2-oxo-3,4-dihydropyrimidin-1(2H)-yl]oxolan-2-yl}methyl 2-methylpropanoate. It has an empirical formula of C<sub>13</sub>H<sub>19</sub>N<sub>3</sub>O<sub>7</sub> and its molecular weight is 329.31 g/mol. Its structural formula is:



Molnupiravir is a white to off-white powder that is soluble in water.

Each LAGEVRIO capsule, for oral use, contains 200 mg of molnupiravir and the following inactive ingredients: croscarmellose sodium, hydroxypropyl cellulose, magnesium stearate and microcrystalline cellulose and purified water. The capsule shell is made of hypromellose, red iron oxide and titanium dioxide. The capsule is printed with white ink made of butyl alcohol, dehydrated alcohol, isopropyl alcohol, potassium hydroxide, propylene glycol, purified water, shellac, strong ammonia solution and titanium dioxide.

## 12 CLINICAL PHARMACOLOGY

### 12.1 Mechanism of Action

Molnupiravir is a prodrug with antiviral activity against SARS-CoV-2. It is metabolized to the cytidine nucleoside analogue, NHC which distributes into cells where NHC is phosphorylated to form the pharmacologically active ribonucleoside triphosphate (NHC-TP). NHC-TP incorporation (as NHC-monophosphate [NHC-MP]) into SARS-CoV-2 RNA by the viral RNA polymerase (nsp12) results in an accumulation of errors in the viral genome leading to inhibition of replication. The mechanism of action (known as viral error catastrophe or viral lethal mutagenesis) is supported by biochemical and cell culture data, studies of SARS-CoV-2 infection in animal models, and analyses of SARS-CoV-2 genome sequences in human subjects treated with LAGEVRIO.

### 12.2 Pharmacodynamics

The relationship between NHC and intracellular NHC-TP with antiviral efficacy has not been evaluated clinically.

### 12.3 Pharmacokinetics

Molnupiravir is a 5'-isobutyrate prodrug of NHC that is hydrolyzed during or after absorption. NHC, the primary circulating analyte, is taken up by cells and anabolized to NHC-TP. NHC is

eliminated by metabolism to uridine and/or cytidine through the same pathways involved in endogenous pyrimidine metabolism. NHC pharmacokinetics are shown in Table 2.

**Table 2: Pharmacokinetics of NHC After Multiple Oral Administration of 800 mg LAGEVRIO Every 12 Hours**

	NHC Geometric Mean (%CV)
<b>Pharmacokinetics in Patients</b>	
AUC <sub>0-12hr</sub> (ng*hr/mL)*	8260 (41.0)
C <sub>max</sub> (ng/mL)*	2330 (36.9)
C <sub>12hr</sub> (ng/mL)*	31.1 (124)
<b>Pharmacokinetics in Healthy Subjects</b>	
AUC <sub>0-12hr</sub> (ng*hr/mL)	8330 (17.9)
C <sub>max</sub> (ng/mL)	2970 (16.8)
C <sub>12hr</sub> (ng/mL)	16.7 (42.8)
AUC Accumulation Ratio	1.09 (11.8)
<b>Absorption</b>	
T <sub>max</sub> (hr)†	1.50 [1.00 – 2.02]
Effect of Food	35% reduction in C <sub>max</sub> , no effect on AUC
<b>Distribution</b>	
Plasma Protein Binding ( <i>in vitro</i> )	0%
Apparent Volume of Distribution (L)*	142
<b>Elimination</b>	
Effective t <sub>1/2</sub> (hr)	3.3
Apparent Clearance (L/hr)*	76.9
Fraction of dose excreted in urine over the time interval of 0-12 hours	3% (81.6%)
Values were obtained from a Phase 1 study of healthy subjects, unless otherwise indicated.	
*Values were obtained from population PK analysis.	
†Median [min - max]	

#### Specific Populations

Population PK analysis results indicated that age, sex, race, ethnicity, or disease severity do not meaningfully influence the PK of NHC.

#### *Pediatric Patients*

LAGEVRIO has not been studied in pediatric patients.

#### *Patients with Renal Impairment*

Renal clearance is not a meaningful route of elimination for NHC. In a population PK analysis, mild or moderate renal impairment did not have a meaningful impact on the PK of NHC. The PK of molnupiravir and NHC has not been evaluated in patients with eGFR less than 30 mL/min/1.73m<sup>2</sup> or on dialysis.

#### *Patients with Hepatic Impairment*

The PK of molnupiravir and NHC has not been evaluated in patients with moderate and severe hepatic impairment. Preclinical data indicate that hepatic elimination is not expected to be a major route of NHC elimination; therefore, hepatic impairment is unlikely to affect NHC exposure.

#### Drug Interaction Studies

*In vitro* study results indicated that molnupiravir and NHC are not substrates of CYP enzymes or human P-gp and BCRP transporters. *In vitro* study results also indicated that molnupiravir and NHC are not inhibitors of CYP1A2, 2B6, 2C8, 2C9, 2C19, 2D6, and 3A4 or inhibitors of OATP1B1, OATP1B3, OCT1, OCT2, OAT1, OAT3, MATE1, MATE2K, MRP2, MDR1 and BCRP

or inducers of CYP1A2, 2B6, and 3A4. The interaction between molnupiravir with concomitant medications, including other treatments for mild-to-moderate COVID-19, has not been evaluated.

## **12.4 Microbiology**

### *Antiviral Activity*

NHC, the nucleoside analogue metabolite of molnupiravir, was active in cell culture assays against SARS-CoV-2 with 50% effective concentrations (EC<sub>50</sub> values) ranging between 0.67 to 2.66 µM in A-549 cells and 0.32 to 2.03 µM in Vero E6 cells. NHC had similar activity against SARS-CoV-2 variants Alpha (B.1.1.7), Beta (B.1.351), Gamma (P.1), Delta (B.1.617.2), Lambda (C.37), Mu (B.1.621) and Omicron (B.1.1.529/BA.1 and BA.1.1), with EC<sub>50</sub> values of 0.95-2.6 µM. NHC had non-antagonistic antiviral activity with remdesivir against SARS-CoV-2 in cell culture.

### *Resistance*

No amino acid substitutions in SARS-CoV-2 associated with resistance to NHC have been identified in Phase 2 clinical trials evaluating LAGEVRIO for the treatment of COVID-19. Studies to evaluate selection of resistance to NHC with SARS-CoV-2 in cell culture have not been completed. Resistance selection studies have been conducted with other coronaviruses (MHV and MERS-CoV) and showed a low likelihood of resistance development to NHC. Following 30 passages in cell culture, only a 2-fold decrease in susceptibility was observed and no NHC resistance-associated amino acid substitutions were identified.

In clinical trials, encoded amino acid changes (substitutions, deletions or insertions) were more likely to be detected in viral sequences in subjects treated with LAGEVRIO compared to placebo. In a small number of subjects amino acid changes in the spike protein occurred at positions targeted by monoclonal antibodies and vaccines. The clinical and public health significance of these changes are unknown.

### *Cross-Resistance*

NHC retained activity in cell culture against virus with polymerase (nsp 12) substitutions (e.g., F480L, V557L and E802D) associated with decreased remdesivir susceptibility, indicating a lack of cross-resistance.

### *Activity against SARS-CoV-2 in animal models*

The antiviral activity of molnupiravir has been demonstrated in mouse, hamster, and ferret models of SARS-CoV-2 infection when dosing was administered prior to or within 1-2 days after viral challenge. In SARS-CoV-2 infected ferrets, molnupiravir significantly reduced SARS-CoV-2 viral titers in the upper respiratory tract and completely inhibited viral spread to untreated contact animals. In SARS-CoV-2 infected Syrian hamsters, molnupiravir reduced viral RNA and infectious virus titers in the lungs of animals. Histopathological analysis of lung tissue harvested after infection showed significantly reduced SARS-CoV-2 viral antigen levels and a lower abundance of pulmonary lesions in molnupiravir-treated animals compared with controls.

### *In Vitro Cytotoxicity*

NHC, the nucleoside analogue metabolite of molnupiravir, had variable cytotoxicity against different mammalian cell types with CC<sub>50</sub> values ranging from 7.5 µM (human lymphoid CEM cell line) to >100 µM, in 3-day exposure assays. Molnupiravir inhibited the proliferation of human bone marrow progenitor cells with CC<sub>50</sub> values of 24.9 µM and 7.7 µM for erythroid and myeloid progenitor proliferation, respectively, in 14-day colony formation assays.

## **13 NONCLINICAL TOXICOLOGY**

### **13.1 Carcinogenesis, Mutagenesis, Impairment of Fertility**

#### Carcinogenesis

A mouse carcinogenicity study with molnupiravir is ongoing.

### Mutagenesis

Molnupiravir and NHC were positive in the *in vitro* bacterial reverse mutation assay (Ames assay) with and without metabolic activation. Molnupiravir was studied in two *in vivo* rodent mutagenicity models. The *in vivo* Pig-a mutagenicity assay gave equivocal results. Molnupiravir was negative in the *in vivo* Big Blue® (cII Locus) transgenic rodent mutagenicity assay. Molnupiravir was negative for induction of chromosomal damage in *in vitro* micronucleus (with and without metabolic activation) and *in vivo* rat micronucleus assays. To assess effects on germ cells, a transgenic rodent male germ cell mutagenicity assay is planned.

Based on the totality of the available genotoxicity data and the duration of treatment (5 days), molnupiravir is low risk for genotoxicity.

### Impairment of Fertility

There were no effects on fertility, mating performance or early embryonic development when molnupiravir was administered to female or male rats at NHC exposures approximately 2 and 6 times, respectively, the human NHC exposure at the RHD.

### **13.2 Animal Toxicology and/or Pharmacology**

Bone and cartilage toxicity changes resulting in impaired transformation of growth cartilage into new bone were observed in the femur and tibia of rats in a 3-month toxicity study at  $\geq 500$  mg/kg/day (5 times the human NHC exposure at the RHD). There was no bone or cartilage toxicity in a 1-month toxicity study in rats up to 500 mg/kg/day (4 and 8 times the human NHC exposure at the RHD in females and males, respectively), in dogs dosed for 14 days up to 50 mg/kg/day (similar to the human NHC exposure at the RHD), or in a 1-month toxicity study in mice up to 2,000 mg/kg/day (19 times the human NHC exposure at the RHD).

Growth cartilage is not present in mature skeletons, therefore the bone and cartilage findings are not relevant for adult humans but may be relevant for pediatric patients [*see Warnings and Precautions (5.3) and Use in Specific Populations (8.4)*].

Reversible, dose-related bone marrow toxicity affecting all hematopoietic cell lines was observed in dogs at  $\geq 17$  mg/kg/day (less than the human NHC exposure at the RHD). Mild decreases in peripheral blood cell and platelet counts were seen after 7 days of molnupiravir treatment progressing to more severe hematological changes after 14 days of treatment. Neither bone marrow nor hematological toxicity was observed in a 1-month toxicity study in mice up to 2,000 mg/kg/day (19 times the human NHC exposure at the RHD) and a 3-month toxicity study in rats up to 1,000 mg/kg/day (9 and 15 times the human NHC exposure at the RHD in females and males, respectively).

### **14 CLINICAL STUDIES**

Clinical data supporting this EUA are based on data from 1,433 randomized subjects in the Phase 3 MOVe-OUT trial (NCT04575597). MOVe-OUT is a randomized, placebo-controlled, double-blind clinical trial studying LAGEVRIO for the treatment of non-hospitalized patients with mild-to-moderate COVID-19 who are at risk for progressing to severe COVID-19 and/or hospitalization. Eligible subjects were 18 years of age and older and had one or more pre-defined risk factors for disease progression: over 60 years of age, diabetes, obesity (BMI  $\geq 30$ ), chronic kidney disease, serious heart conditions, chronic obstructive pulmonary disease, or active cancer. The study included symptomatic subjects not vaccinated against SARS-CoV-2 and who had laboratory confirmed SARS-CoV-2 infection and symptom onset within 5 days of randomization. Subjects were randomized 1:1 to receive 800 mg of LAGEVRIO or placebo orally twice daily for 5 days.

At baseline, in all randomized subjects, the median age was 43 years (range:18 to 90); 17% of subjects were over 60 years of age and 3% were 75 years of age or older; 49% of subjects were male; 57% were White, 5% Black or African American, 3% Asian, 50% Hispanic or Latino. The majority of subjects were enrolled from sites in Latin America (46%) and Europe (33%); 12%

were enrolled in Africa, 6% were enrolled in North America and 3% were enrolled in Asia. Forty-eight percent of subjects received LAGEVRIO or placebo within 3 days of COVID-19 symptom onset. The most common risk factors were obesity (74%), over 60 years of age (17%), and diabetes (16%). Among 792 subjects (55% of total randomized population) with available baseline SARS-CoV-2 variant/clade identification results, 58% were infected with Delta (B.1.617.2 and AY lineages), 20% were infected with Mu (B.1.621), 11% were infected with Gamma (P.1), and the remainder were infected with other variants/clades. Overall, baseline demographic and disease characteristics were well balanced between the treatment arms.

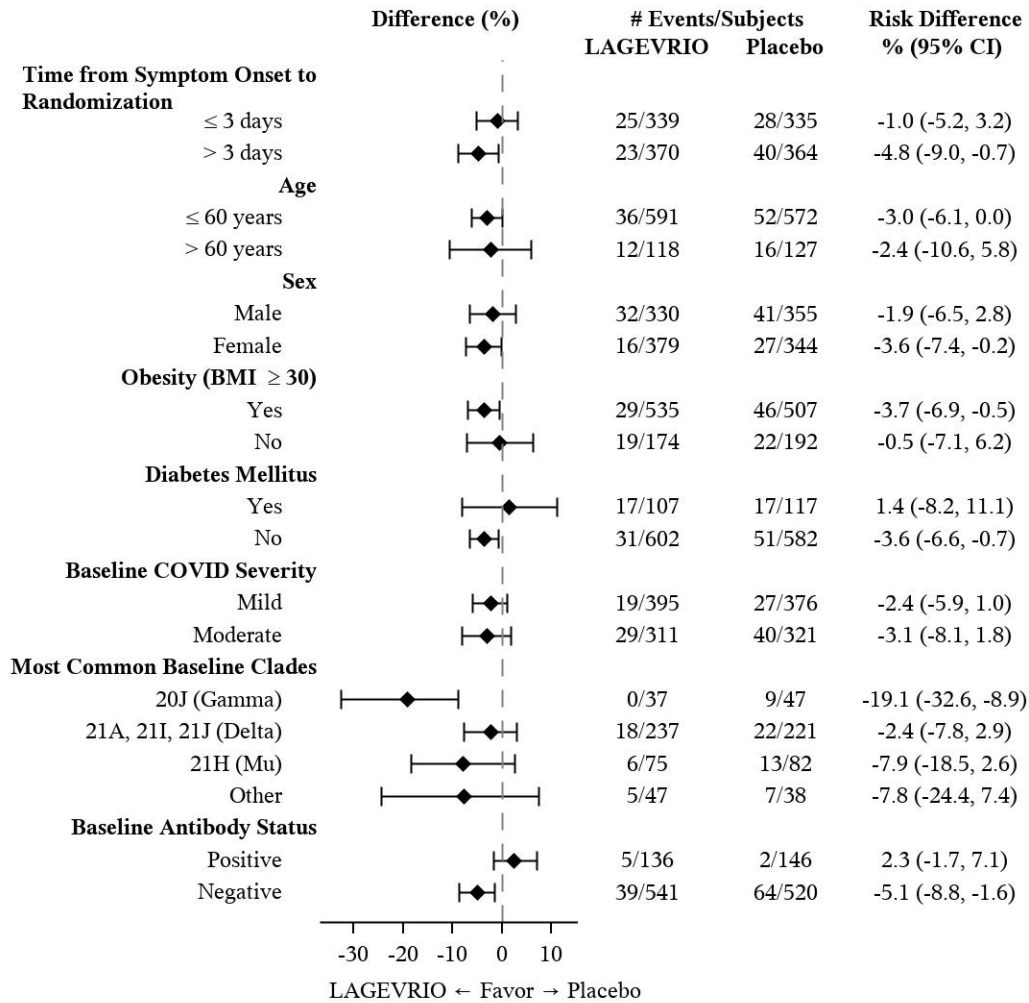
Table 3 provides the results of the primary endpoint (the percentage of subjects who were hospitalized or died through Day 29 due to any cause). The efficacy results are based on unvaccinated adults who were 18 years of age and older and had one or more pre-defined risk factors for disease progression: over 60 years of age, diabetes, obesity (BMI ≥30), chronic kidney disease, serious heart conditions, chronic obstructive pulmonary disease, or active cancer. Please refer to Figure 1 for results by certain subgroups. These subgroup analyses are considered exploratory. Data are not available in certain subgroups of subjects who are at high risk for progression to severe COVID-19 as defined by CDC.

**Table 3. Efficacy Results in Non-Hospitalized Adults with COVID-19\***

<b>LAGEVRIO (N=709)</b>	<b>Placebo (N=699)</b>	<b>Adjusted Risk Difference</b>
<b>n (%)</b>	<b>n (%)</b>	<b>% (95% CI)</b>
<b>All-cause hospitalization ≥24 hours for acute care or death through Day 29</b>		
48 (6.8%)	68 (9.7%)	-3.0% (-5.9%, -0.1%)
<b>All-cause mortality through Day 29</b>		
1 (0.1%)	9 (1.3%)	
<p>*The determination of primary efficacy was based on a planned interim analysis of 762 subjects. At the interim analysis, 7.3% of patients who received LAGEVRIO were either hospitalized or died through Day 29 (28/385), compared with 14.1% of placebo-treated patients (53/377). The adjusted risk difference was -6.8% with a 95% CI of (-11.3%, -2.4%) and 2-sided p-value = 0.0024.</p> <p>Adjusted relative risk reduction of LAGEVRIO compared to placebo for all randomized subjects was 30% (95% CI: 1%, 51%).</p> <p>Analyses are adjusted by the stratification factor of time of COVID-19 symptom onset (≤3 days vs. &gt;3 [4-5] days).</p>		

**Figure 1. Subgroup Efficacy Results in Non-Hospitalized Adults with COVID-19 - All-Randomized Subjects**





The corresponding confidence interval is based on Miettinen & Nurminen method.

The modified intent-to-treat population is the efficacy analysis population.

Baseline serum samples were evaluated with the Roche Elecsys anti-N assay to test for the presence of antibodies (IgM, IgG and IgA) against the SARS-CoV-2 nucleocapsid protein.

The findings of these subgroup analyses are considered exploratory.

## 16 HOW SUPPLIED/STORAGE AND HANDLING

### How Supplied

LAGEVRIO capsules are supplied as follows:

Contents	Description	How Supplied	NDC
200 mg molnupiravir	Swedish Orange opaque capsules with corporate logo and "82" printed in white ink	40 count bottles	NDC-0006-5055-06 NDC-0006-5055-07

### Storage and Handling

Store LAGEVRIO capsules at 20° to 25°C (68° to 77°F); excursions permitted between 15° to 30°C (59° to 86°F) [see USP Controlled Room Temperature].

## 17 PATIENT COUNSELING INFORMATION

As a prescribing healthcare practitioner, you must communicate to the patient and/or caregiver information consistent with the “FACT SHEET FOR PATIENTS AND CAREGIVERS” and document that information was provided. A copy of this Fact Sheet should be provided to the patient and/or caregiver prior to receiving LAGEVRIO [see Box].

#### Hypersensitivity Reactions

Inform patients that hypersensitivity reactions have been reported, even following a single dose of LAGEVRIO, and to discontinue the drug and to inform their healthcare provider at the first sign of a skin rash, hives or other skin reactions, a rapid heartbeat, difficulty in swallowing or breathing, any swelling suggesting angioedema (for example, swelling of the lips, tongue, face, tightness of the throat, hoarseness), or other symptoms of an allergic reaction [see Warnings and Precautions (5.2)].

#### Risk of Fetal Toxicity

Advise patients that LAGEVRIO is not recommended for use in pregnancy because it may cause fetal harm. Advise individuals of childbearing potential to inform their healthcare provider of a known or suspected pregnancy [see Box, Warnings and Precautions (5.1) and Use in Specific Populations (8.1)].

Advise individuals of childbearing potential to use effective contraception correctly and consistently while taking LAGEVRIO and for 4 days after the last dose.

While the risk is regarded as low, nonclinical studies to fully assess the potential for LAGEVRIO to affect offspring of treated males have not been completed. Advise sexually active individuals with partners of childbearing potential to use a reliable method of contraception consistently and correctly while taking LAGEVRIO and for at least 3 months after the last dose of LAGEVRIO. The risk beyond 3 months after the last dose of LAGEVRIO is unknown. Studies to understand the risk beyond three months are ongoing [see Use in Specific Populations (8.3)].

#### Risk of Bone and Cartilage Toxicity

LAGEVRIO is not authorized for use in patients less than 18 year of age as it may affect bone growth and cartilage formation [see Warnings and Precautions (5.3) and Use in Specific Populations (8.4)].

#### Pregnancy Surveillance Program

There is a pregnancy surveillance program that monitors pregnancy outcomes in individuals exposed to LAGEVRIO during pregnancy. Encourage participation and advise patients about how they may enroll in the pregnancy surveillance program. Advise patients who have taken LAGEVRIO during pregnancy to report their pregnancy to Merck Sharp & Dohme LLC, Rahway, NJ USA at 1-877-888-4231 or pregnancyreporting.msdd.com [see Use in Specific Populations (8.1)].

#### Lactation

Breastfeeding is not recommended while taking LAGEVRIO and for 4 days after the last dose of LAGEVRIO. Advise lactating individuals to consider interrupting breastfeeding and to consider pumping and discarding breast milk during treatment and for 4 days after the last dose of LAGEVRIO [see Use in Specific Populations (8.2)].

#### Administration Instructions

Inform patients to take LAGEVRIO with or without food. Advise patients to swallow LAGEVRIO capsules whole, and to not open, break, or crush the capsules. Instruct patients that if they miss a dose of LAGEVRIO and it is within 10 hours of the time it is usually taken, the patient should take it as soon as possible and resume the normal dosing schedule. If the patient misses a dose by more than 10 hours, the patient should not take the missed dose and instead take the next dose at the regularly scheduled time. Advise the patient to not double the dose to make up for a missed dose [see Dosage and Administration (2.2)].

Alert the patient of the importance of completing the full 5-day treatment course and to continuing isolation in accordance with public health recommendations to maximize viral clearance and minimize transmission of SARS-CoV-2 [see *Dosage and Administration (2.2)*].

**18 MANUFACTURER INFORMATION**

For additional information visit: [www.molnupiravir.com](http://www.molnupiravir.com)

If you have questions, please contact  
1-800-672-6372

Manuf. for: Merck Sharp & Dohme LLC  
Rahway, NJ 07065, USA

For patent information: [www.msd.com/research/patent](http://www.msd.com/research/patent)  
Copyright © 2021-2022 Merck & Co., Inc., Rahway, NJ, USA and its affiliates.  
All rights reserved.  
usfshcp-mk4482-c-2206r003